



Head Office
Panchshil Realty, Tower-E, Tech Park One,
191 Yerwada, Pune - 411 006 (INDIA)

Mumbai Office
Panchshil Realty, 20th Floor, Express Towers,
Nariman Point, Mumbai 400 021 (INDIA)

T : 1800 121 9900 | E : sales@panchshil.com

www.panchshil.com



This project has been registered via MahaRERA registration number P52100017890 and the details are available on the website <https://maharera.mahaonline.gov.in/> under registered projects.

DISCLAIMER - Panchshil Infrastructure Holdings Pvt. Ltd. (PIHPL) makes all reasonable efforts to include accurate and up-to-date information in this brochure. However, PIHPL does not make any warranties or representations, express or implied, as to the timeliness, accuracy or completeness of the information contained or referred in this material. Therefore, any advice or information received via this material should not be acted upon without consulting our sales team.

References to any products, features or services are to be read as statements of fact and not as their endorsement or recommendation by PIHPL. It is the constant endeavour of PIHPL to enhance the quality of the project. Further, PIHPL reserves the right to make any changes in this way, at any time and for any reason, without prior notice, to the contents and information in this brochure, including materials, equipment, specifications and/or availability. It is clearly understood that dimensions and floor plan layouts are approximate and building illustrations are design concepts only. Images are for representative purposes only and views rendered are representational and not intended to reflect actual views.

Except with specific prior information of PIHPL, any reproduction, retransmission or other use of any information proprietary or otherwise, in this brochure is strictly prohibited. Copyright in all the designs, plans, views shared in this brochure shall remain the property of PIHPL and cannot be used in any other work except by Agreement with PIHPL. Any use of this brochure and any legal dispute arising in connection therewith shall exclusively be governed by Indian Law and all arbitration shall fall within the jurisdiction of Pune courts.



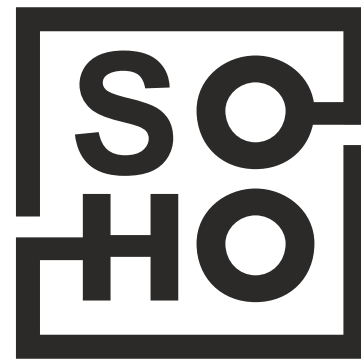
THE DESIGN.



**think.
feel.
experience.**

Delve into a world of opportunities and divergent paths leading you towards that coveted space, one that compliments your lifestyle and empowers your work.

Presenting contemporary homes with workspaces and retail avenues epitomising the modern concept of 'Small Office, Home Offices' for the entrepreneurial you.



SOHO, a delightful mélange of smart living with functional workspaces, retail and dining avenues, caters to your dynamic needs.

It is located in Wagholi amidst some of the city's finest edifices, like EON Free Zone, World Trade Center, Panchshil Towers and YOO Villas.

SOHO is a self-contained architectural concept that exemplifies the contemporary idea of 'Small Office, Home Office'; allowing you to live, work, shop and dine at one premiere destination.

At its nucleus, SOHO Studios are sprightly duplex apartments accompanied by workspaces that allow you to indulge in work, right from the comfort of your home.

Your business never had it better, because the smart and interactive SOHO Works office spaces present the perfect impetus that help ventures grow.

And, for those who like to mix it up, SOHO Street's retail stores and dining options offer just the right blend of wholesome entertainment.

**At SOHO,
You define your work-life balance!**

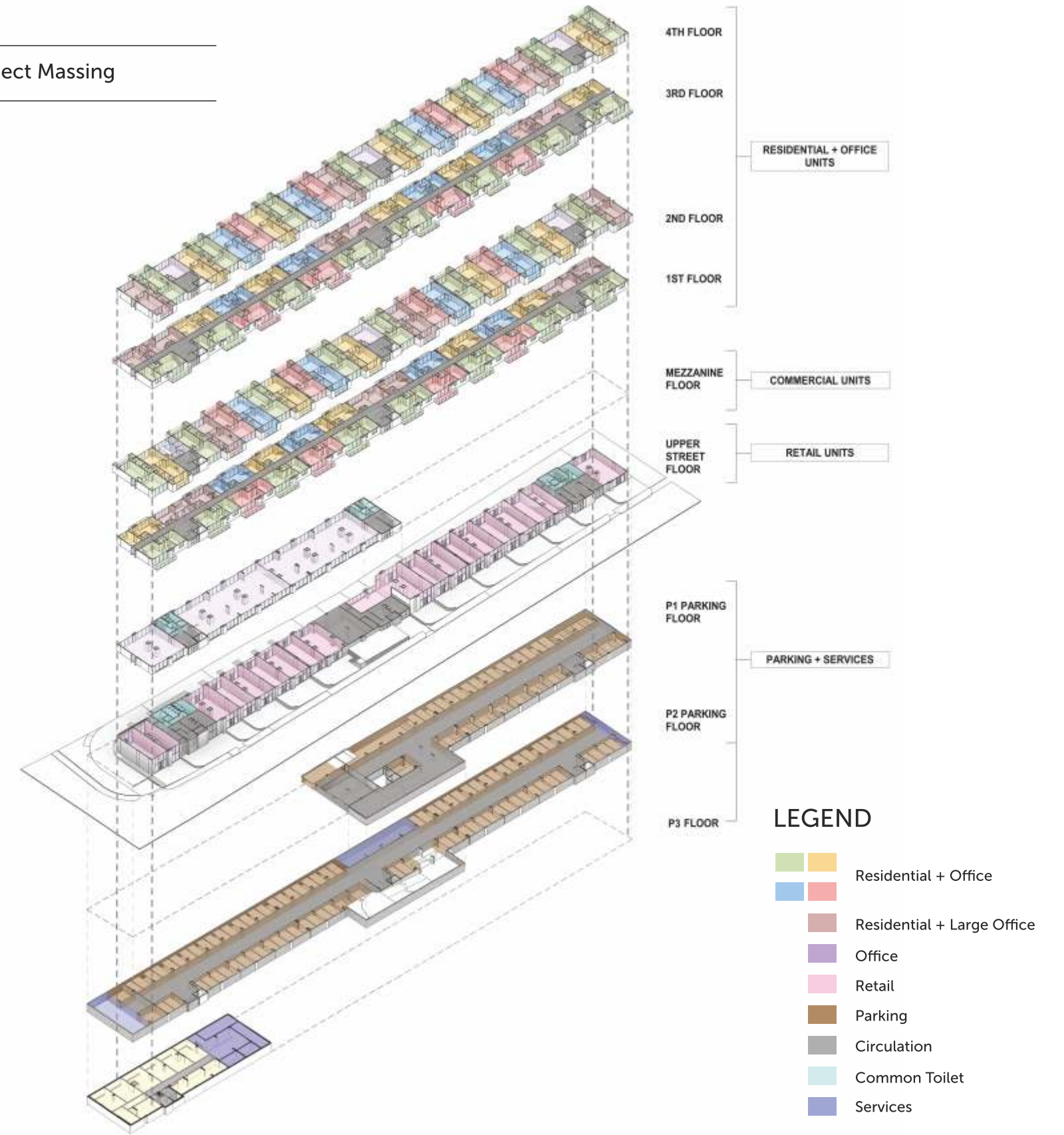


Architectural Rendition



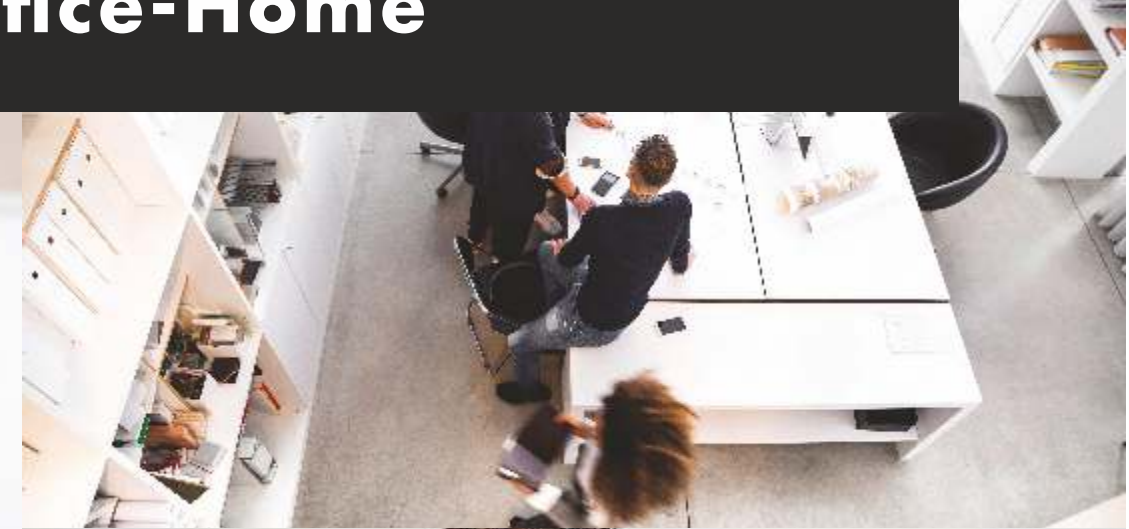
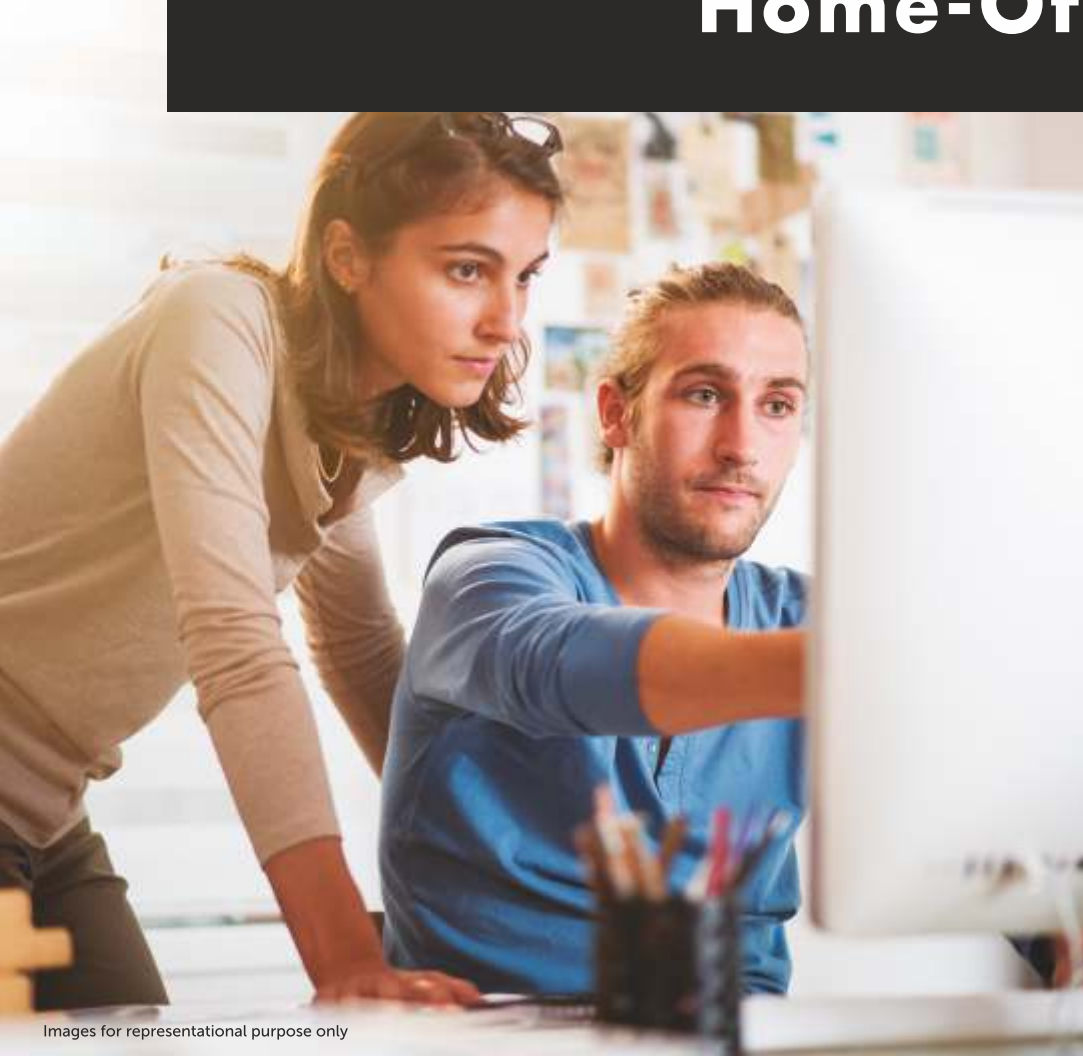


Project Massing



DISCLAIMER

1. The carpet area of the unit mentioned is the usable area, after excluding external walls, but including the area under internal partition wall, as defined in the Real Estate (Regulation and Development) Act ("RERA") and as illustrated in circular no 4/2017 (MahaRera/Secy/File No. 27/84/2017) of MahaRERA.
2. Internal room dimensions are from un-finished wall to wall, in line with sanction plans.
3. The areas, prices, elevation and specifications in the sale agreement signed between you and the company shall be final and binding.
4. The designs, dimensions, cost, facilities, plans, specification, furniture and images are only indicative in nature and are only for the purpose of illustration, including a possible layout. They do not form part of the standard specification and all images shown are artist's impression and stock image proposed. Copyright © 2019 Panchshil Infrastructure Holdings Pvt. Ltd.



**SO
HO**
STUDIO

Home-Office-Home



Image for representational purpose only



SOHO by Panchshil offers 48 limited-edition duplexes that brilliantly combine smart living with modern cutting-edge workspaces.

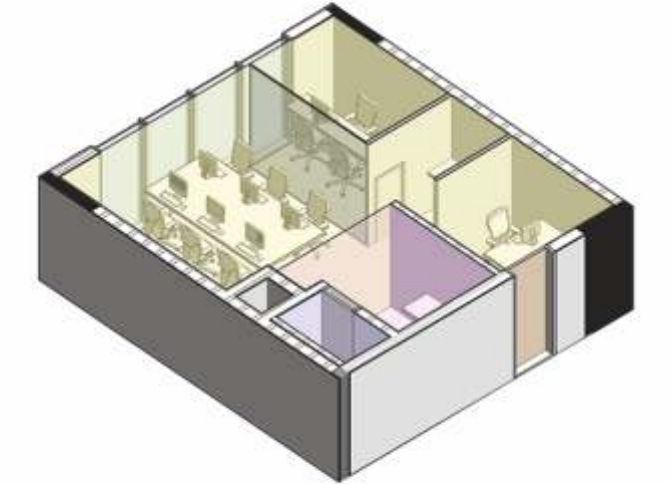
Every home at SOHO is designed to give you an integrated living and working experience. The double-height living room of 6.4 mts. amplifies the space, making your evenings at home as delightful as your mornings before work.

The spatial design and engineering of SOHO Studios involves a style that maximises the area of each residential unit and creates an architectural synergy. With each home ranging from 104 sq. mts. (1119 sq. ft.) to 138 sq. mts. (1485 sq. ft.), you'll experience a personalised space that resonates and amplifies your discerning lifestyle, giving you ample room to excel at work and enjoy your cosy home.

SOHO STUDIO - UNIT PLAN



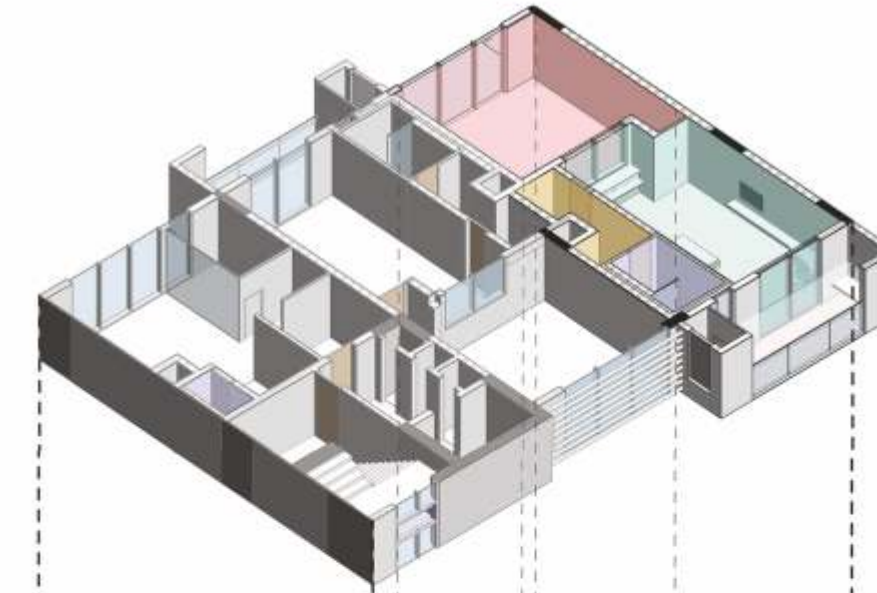
STUDIO



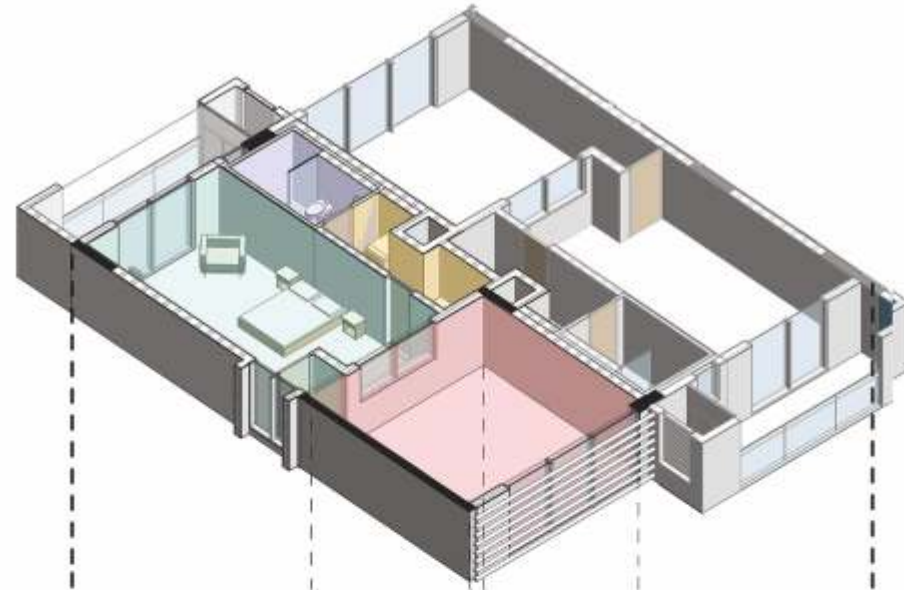
Office Unit

LEGEND

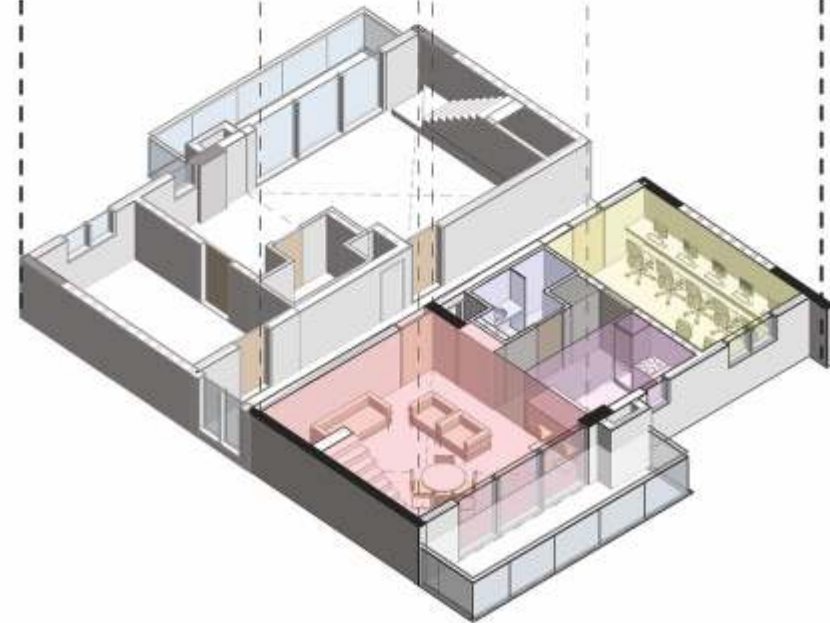
- Living Room
- Toilet
- Kitchen
- Office
- Bedroom
- Walk-In-Wardrobe
- Balcony
- Lobby



Residential + Larger Office Unit



Typical Second & Fourth Floor



Typical First & Third Floor

Residential + Office Unit

DISCLAIMER

1. The carpet area of the unit mentioned is the usable area, after excluding external walls, but including the area under internal partition wall, as defined in the Real Estate (Regulation and Development) Act ("RERA") and as illustrated in circular no 4/2017 (MahaRera/Secy/File No. 27/84/2017) of MahaRERA.
2. Internal room dimensions are from un-finished wall to wall, in line with sanction plans.
3. The areas, prices, elevation and specifications in the sale agreement signed between you and the company shall be final and binding.
4. The designs, dimensions, cost, facilities, plans, specification, furniture and images are only indicative in nature and are only for the purpose of illustration, including a possible layout. They do not form part of the standard specification and all images shown are artist's impression and stock image proposed. Copyright © 2019 Panchshil Infrastructure Holdings Pvt. Ltd.

Double Height Living Room
Architectural Rendition





Double Height Living Room
Architectural Rendition



Bedroom
Architectural Rendition

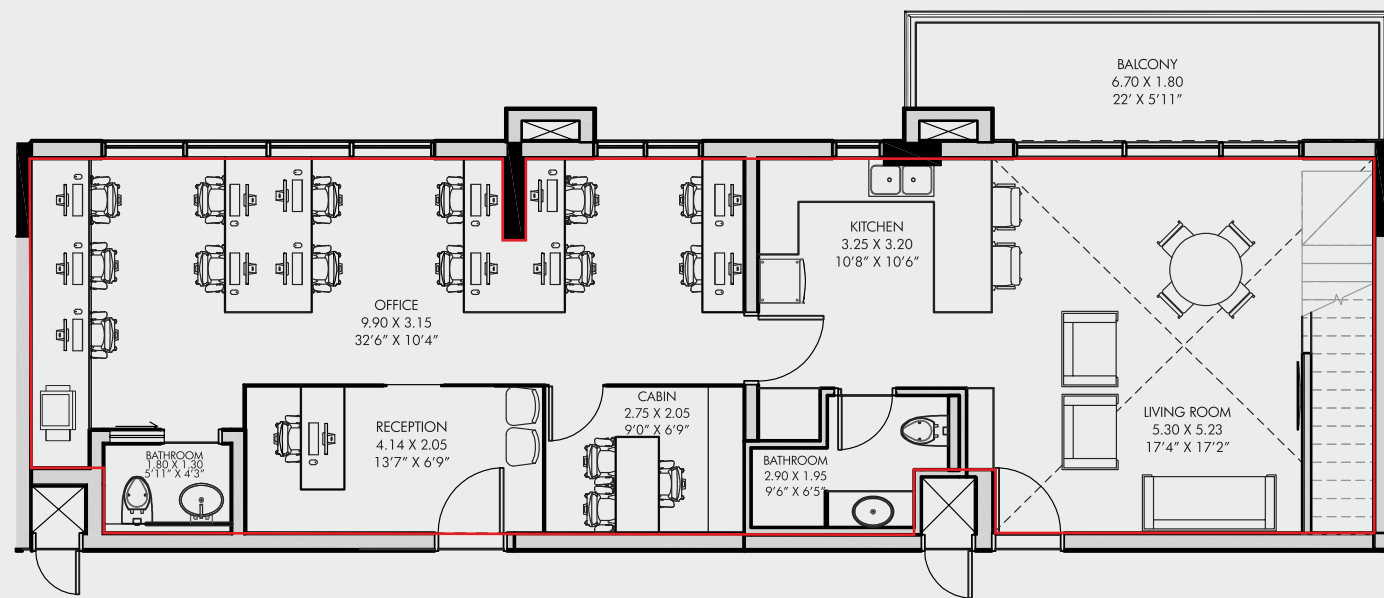


STUDIO

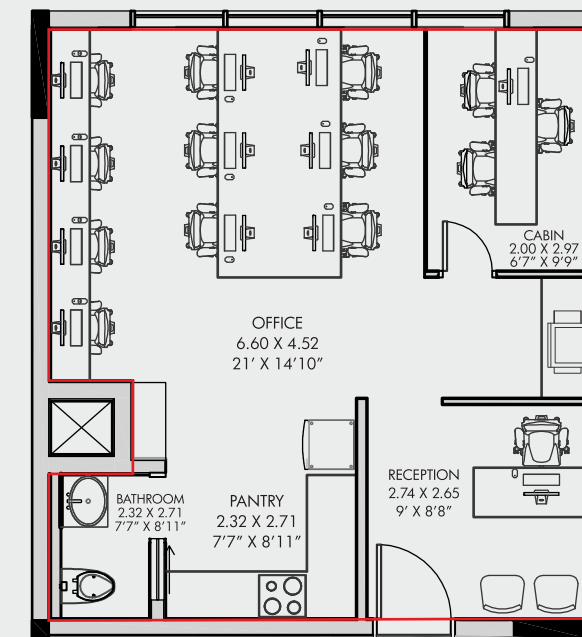
SOHO STUDIO - FLOOR PLAN



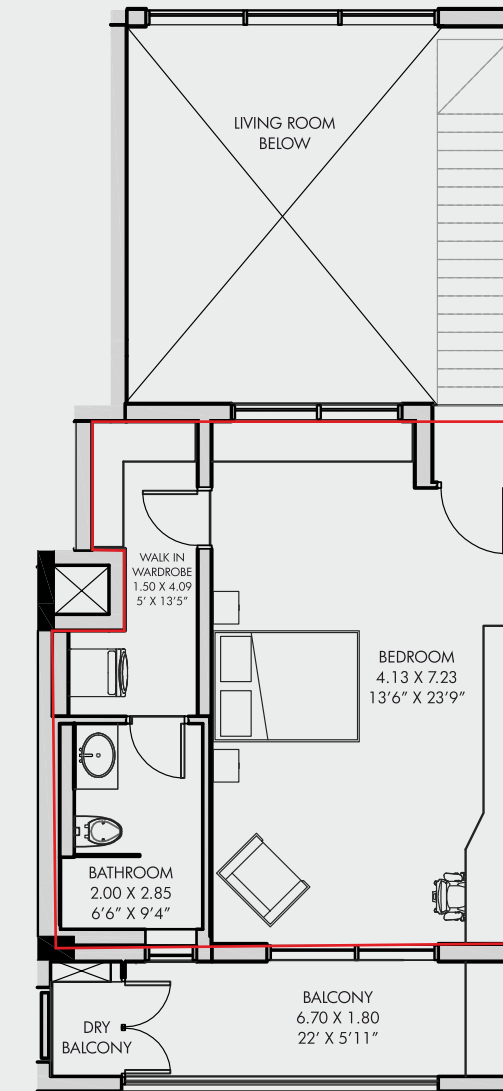
STUDIO



NON TYPICAL UNIT LOWER LEVEL PLAN



OFFICE UNIT 2ND & 4TH LEVEL PLAN



NON TYPICAL UNIT UPPER LEVEL PLAN

RERA Carpet Area ———

RERA Regn. No. P52100017890

DISCLAIMER

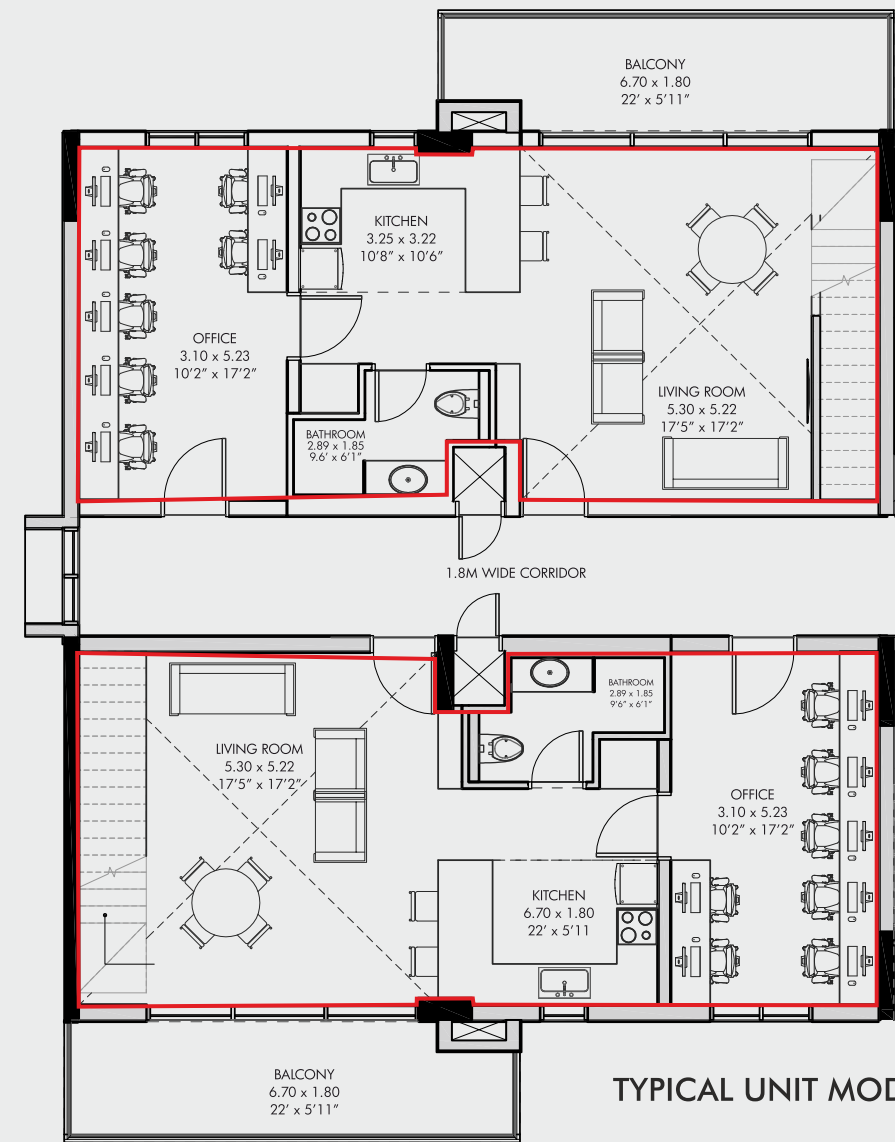
1. The carpet area of the unit mentioned is the usable area, after excluding external walls, but including the area under internal partition wall, as defined in the Real Estate (Regulation and Development) Act ("RERA") and as illustrated in circular no 4/2017 (MahaRera/Secy/File No. 27/84/2017) of MahaRERA.
2. Internal room dimensions are from un-finished wall to wall, in line with sanction plans.
3. The areas, prices, elevation and specifications in the sale agreement signed between you and the company shall be final and binding.
4. The designs, dimensions, cost, facilities, plans, specification, furniture and images are only indicative in nature and are only for the purpose of illustration, including a possible layout. They do not form part of the standard specification and all images shown are artist's impression and stock image proposed. Copyright © 2019 Panchshil Infrastructure Holdings Pvt. Ltd.
5. Furniture layout is for representable purpose only.



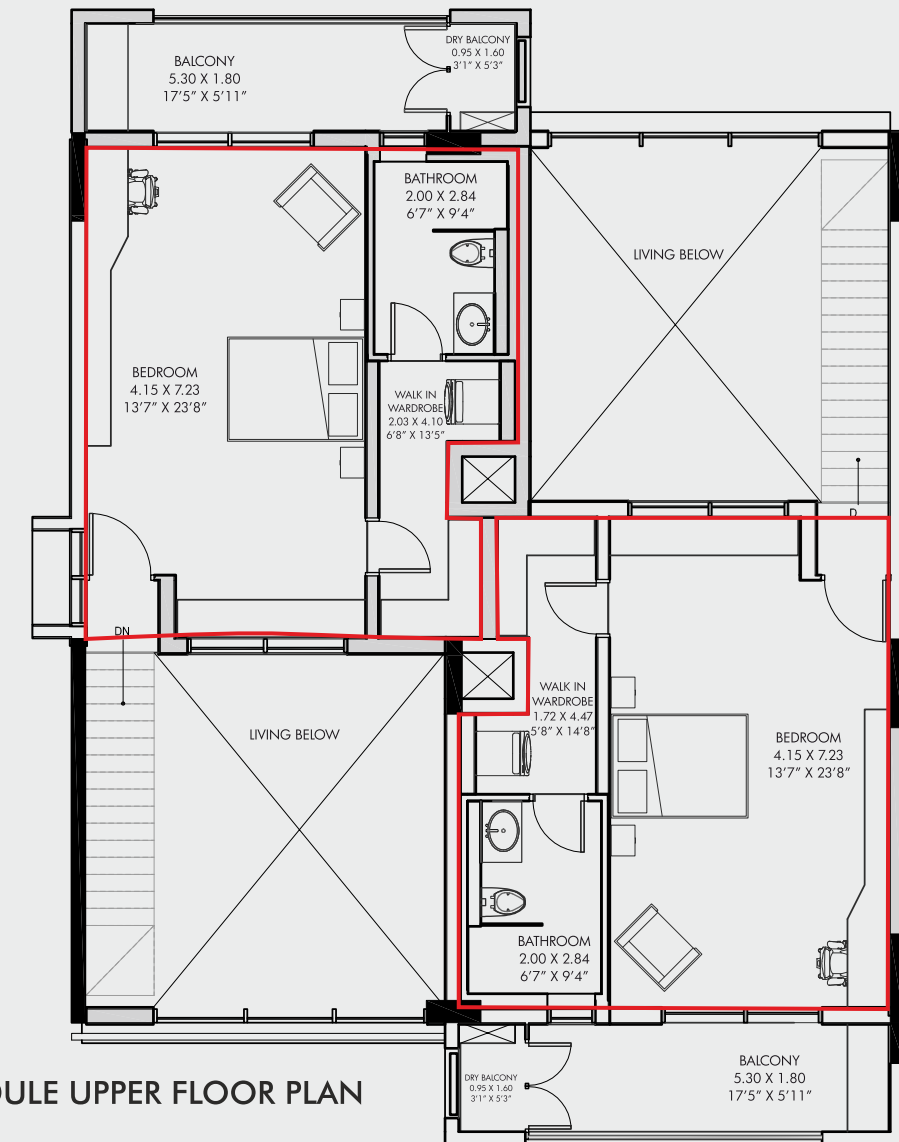
SOHO STUDIO - FLOOR PLAN



STUDIO



TYPICAL UNIT MODULE LOWER FLOOR PLAN



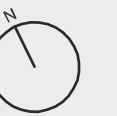
TYPICAL UNIT MODULE UPPER FLOOR PLAN

RERA Carpet Area ———

RERA Regn. No. P52100017890

DISCLAIMER

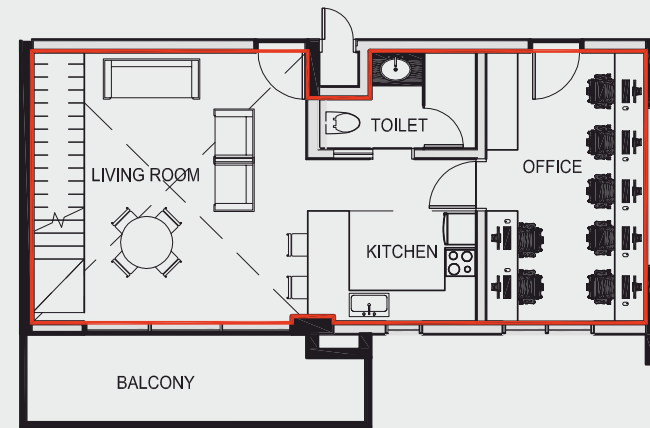
1. The carpet area of the unit mentioned is the usable area, after excluding external walls, but including the area under internal partition wall, as defined in the Real Estate (Regulation and Development) Act ("RERA") and as illustrated in circular no 4/2017 (MahaRera/Secy/File No. 27/84/2017) of MahaRERA.
2. Internal room dimensions are from un-finished wall to wall, in line with sanction plans.
3. The areas, prices, elevation and specifications in the sale agreement signed between you and the company shall be final and binding.
4. The designs, dimensions, cost, facilities, plans, specification, furniture and images are only indicative in nature and are only for the purpose of illustration, including a possible layout. They do not form part of the standard specification and all images shown are artist's impression and stock image proposed. Copyright © 2019 Panchshil Infrastructure Holdings Pvt. Ltd.
5. Furniture layout is for representable purpose only.



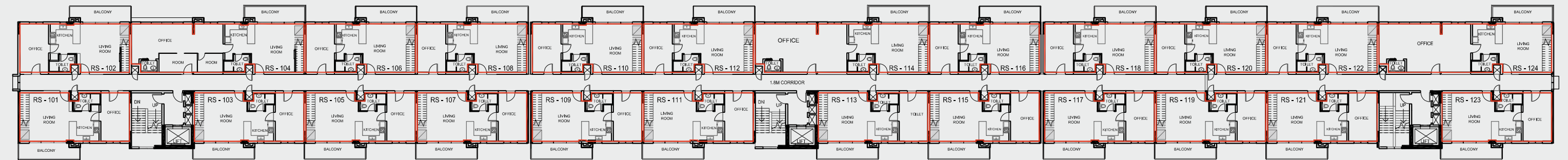
SOHO STUDIO - FIRST & SECOND FLOOR PLAN



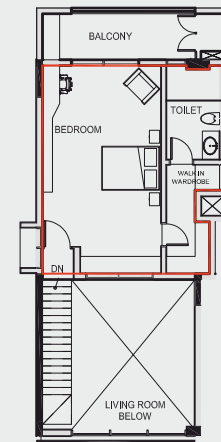
STUDIO



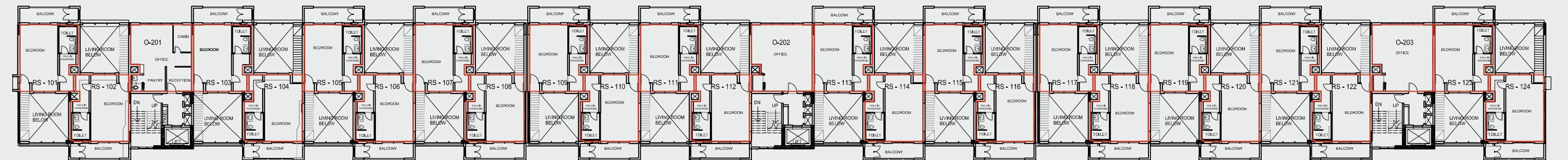
SOHO STUDIO FIRST FLOOR - CALLOUT



FIRST FLOOR PLAN



SOHO STUDIO SECOND FLOOR - CALLOUT



SECOND FLOOR PLAN

FIRST & SECOND FLOOR AREA SCHEDULE

APT. TYPE	UNIT NO.	RERA CARPET AREA SQ. M.	RERA CARPET AREA SQ. FT.	BALCONY AREA SQ. M.	BALCONY AREA SQ. FT.
SOHO - 1	101, 102, 103, 105, 106, 107, 108, 109, 110, 111, 112, 113, 115, 116, 117, 118, 119, 120, 121, 122 & 123	104.08	1120.32	19.35	208.28
SOHO - 3	104, 114 & 124	138.47	1490.49	19.35	208.28

RERA Carpet Area ———

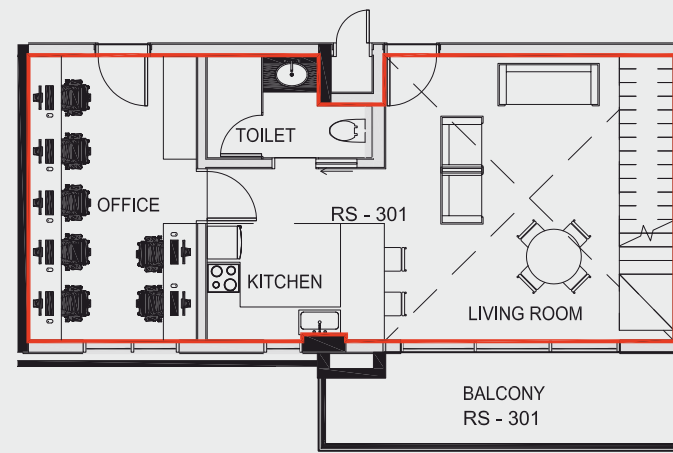
RERA Regn. No. P52100017890

DISCLAIMER

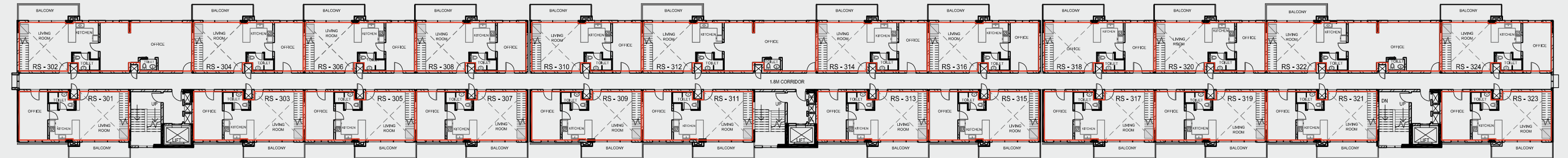
- The carpet area of the unit mentioned is the usable area, after excluding external walls, but including the area under internal partition wall, as defined in the Real Estate (Regulation and Development) Act ("RERA") and as illustrated in circular no 4/2017 (MahaRera/Secy/File No. 27/84/2017) of MahaRERA.
- Internal room dimensions are from un-finished wall to wall, in line with sanction plans.
- The areas, prices, elevation and specifications in the sale agreement signed between you and the company shall be final and binding.
- The designs, dimensions, cost, facilities, plans, specification, furniture and images are only indicative in nature and are only for the purpose of illustration, including a possible layout. They do not form part of the standard specification and all images shown are artist's impression and stock image proposed. Copyright © 2019 Panchshil Infrastructure Holdings Pvt. Ltd.



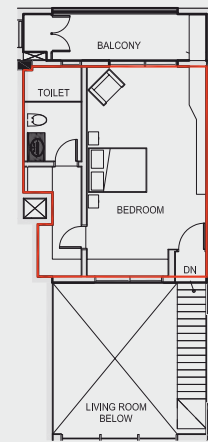
SOHO STUDIO - THIRD & FOURTH FLOOR PLAN



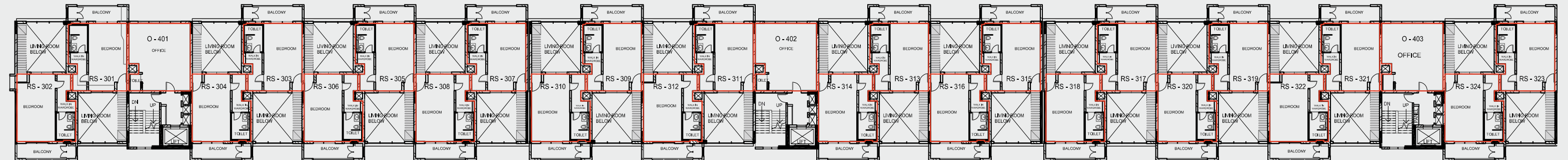
SOHO STUDIO THIRD FLOOR - CALLOUT



THIRD FLOOR PLAN



SOHO STUDIO FOURTH FLOOR - CALLOUT



FOURTH FLOOR PLAN

THIRD & FOURTH FLOOR AREA SCHEDULE

APT. TYPE	UNIT NO.	RERA CARPET AREA SQ. M.	RERA CARPET AREA SQ. FT.	BALCONY AREA SQ. M.	BALCONY AREA SQ. FT.
SOHO - 2	301, 303, 304, 305, 306, 307, 308, 309, 310, 311, 313, 314, 315, 316, 317, 318, 319, 320, 321, 323 & 324	103.89	1118.27	19.35	208.28
SOHO - 4	302, 312 & 322	138.24	1488.02	19.35	208.28

RERA Carpet Area ———

RERA Regn. No. P52100017890

DISCLAIMER

- The carpet area of the unit mentioned is the usable area, after excluding external walls, but including the area under internal partition wall, as defined in the Real Estate (Regulation and Development) Act ("RERA") and as illustrated in circular no 4/2017 (MahaRera/Secy/File No. 27/84/2017) of MahaRERA.
- Internal room dimensions are from un-finished wall to wall, in line with sanction plans.
- The areas, prices, elevation and specifications in the sale agreement signed between you and the company shall be final and binding.
- The designs, dimensions, cost, facilities, plans, specification, furniture and images are only indicative in nature and are only for the purpose of illustration, including a possible layout. They do not form part of the standard specification and all images shown are artist's impression and stock image proposed. Copyright © 2019 Panchshil Infrastructure Holdings Pvt. Ltd.





Boutique-Office-Spaces





Image for representational purposes only



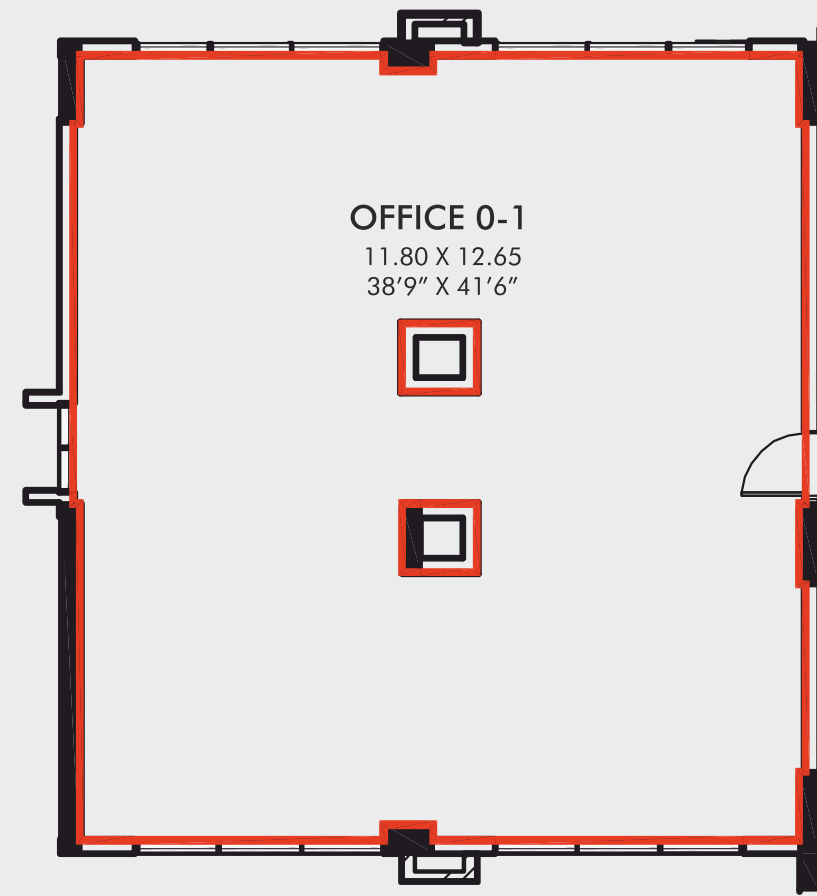
WORKS

The compact independent office spaces at SOHO cleverly optimize the work area for your small and medium sized teams, with the advantage of offering an unparalleled architectural design and the finest of services.

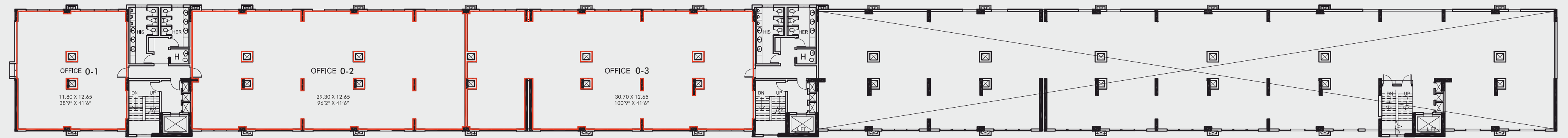
With variants ranging from 47 sq. mts. (505 sq. ft.), 145 sq. mts. (1560 sq. ft.) to 373 sq. mts. (4015 sq. ft.), office spaces at SOHO are designed for businesses to scale.

Operating your private business from SOHO Works gives your brand the advantage of a great location-the vicinity of IT and Finance Fortune 500 companies and a bustling IT corridor-while also maintaining the spunky, creative vibe that eliminates work blues.

SOHO WORKS - MEZZANINE FLOOR PLAN



MEZZANINE FLOOR PLAN - CALLOUT



AREA SCHEDULE

OFFICE TYPE	OFFICE UNIT NO.	RERA CARPET AREA SQ. M.	RERA CARPET AREA SQ. FT.
1	0-1	145.23	1563.26
2	0-2	362.06	3897.21
3	0-3	372.98	4014.76

RERA Carpet Area —

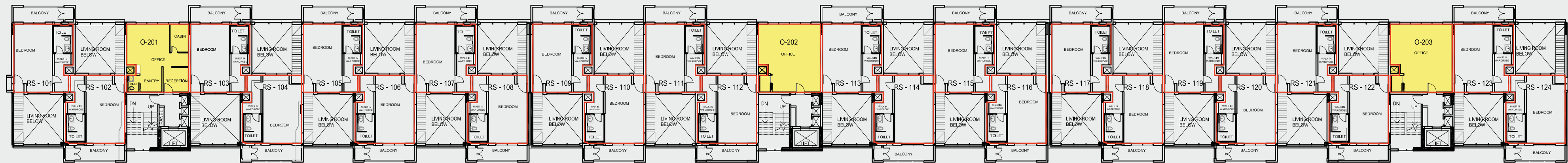
RERA Regn. No. P52100017890

DISCLAIMER

- The carpet area of the unit mentioned is the usable area, after excluding external walls, but including the area under internal partition wall, as defined in the Real Estate (Regulation and Development) Act ("RERA") and as illustrated in circular no 4/2017 (MahaRera/Secy/File No. 27/84/2017) of MahaRERA.
- Internal room dimensions are from un-finished wall to wall, in line with sanction plans.
- The areas, prices, elevation and specifications in the sale agreement signed between you and the company shall be final and binding.
- The designs, dimensions, cost, facilities, plans, specification, furniture and images are only indicative in nature and are only for the purpose of illustration, including a possible layout. They do not form part of the standard specification and all images shown are artist's impression and stock image proposed. Copyright © 2019 Panchshil Infrastructure Holdings Pvt. Ltd.



SOHO WORKS - SECOND FLOOR PLAN



SECOND FLOOR AREA SCHEDULE

OFFICE TYPE	OFFICE UNIT NO.	RERA CARPET AREA SQ. M.	RERA CARPET AREA SQ. FT.
O-4	201, 202 & 203	46.59	501.49

RERA Carpet Area —

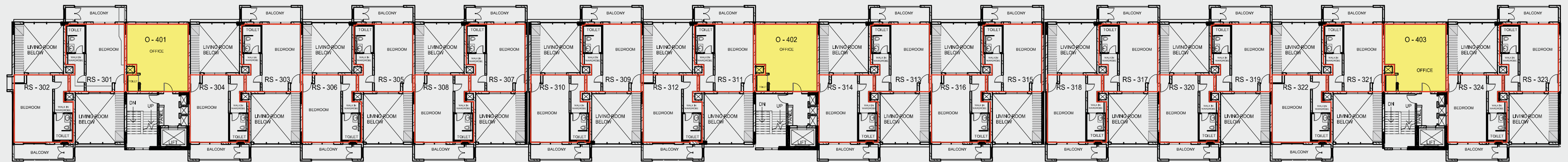
RERA Regn. No. P52100017890

DISCLAIMER

- The carpet area of the unit mentioned is the usable area, after excluding external walls, but including the area under internal partition wall, as defined in the Real Estate (Regulation and Development) Act ("RERA") and as illustrated in circular no 4/2017 (MahaRera/Secy/File No. 27/84/2017) of MahaRERA.
- Internal room dimensions are from un-finished wall to wall, in line with sanction plans.
- The areas, prices, elevation and specifications in the sale agreement signed between you and the company shall be final and binding.
- The designs, dimensions, cost, facilities, plans, specification, furniture and images are only indicative in nature and are only for the purpose of illustration, including a possible layout. They do not form part of the standard specification and all images shown are artist's impression and stock image proposed. Copyright © 2019 Panchshil Infrastructure Holdings Pvt. Ltd.



SOHO WORKS - FOURTH FLOOR PLAN



FOURTH FLOOR AREA SCHEDULE

OFFICE TYPE	OFFICE UNIT NO.	RERA CARPET AREA SQ. M.	RERA CARPET AREA SQ. FT.
0-5	401, 402 & 403	46.52	500.74

RERA Carpet Area ———

RERA Regn. No. P52100017890

DISCLAIMER

- The carpet area of the unit mentioned is the usable area, after excluding external walls, but including the area under internal partition wall, as defined in the Real Estate (Regulation and Development) Act ("RERA") and as illustrated in circular no 4/2017 (MahaRera/Secy/File No. 27/84/2017) of MahaRERA.
- Internal room dimensions are from un-finished wall to wall, in line with sanction plans.
- The areas, prices, elevation and specifications in the sale agreement signed between you and the company shall be final and binding.
- The designs, dimensions, cost, facilities, plans, specification, furniture and images are only indicative in nature and are only for the purpose of illustration, including a possible layout. They do not form part of the standard specification and all images shown are artist's impression and stock image proposed. Copyright © 2019 Panchshil Infrastructure Holdings Pvt. Ltd.





Retail-F&B-Entertainment



Images for representational purpose only



Image for representational purpose only



STREET

Life at SOHO offers you a fine balance of comfort and convenience. The spectacularly laid out retail units are designed to provide a heady mix of shopping and entertainment.

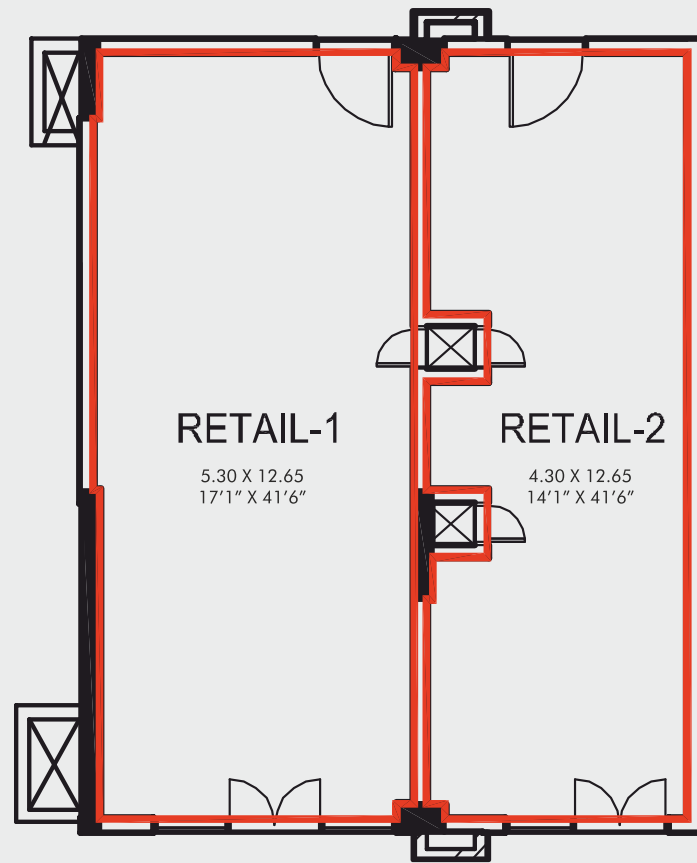
This allows you to discover new ways of living; one where your morning cup of coffee, your penchant for the finest brands, or your evening dinner with friends and family, is literally around the corner.

SOHO Street offers retail spaces, ranging from 52 sq. mts. (559 sq. ft.) to 139 sq. mts. (1496 sq. ft.), each built to curate a world of shopping, food and beverage brands.



STREET

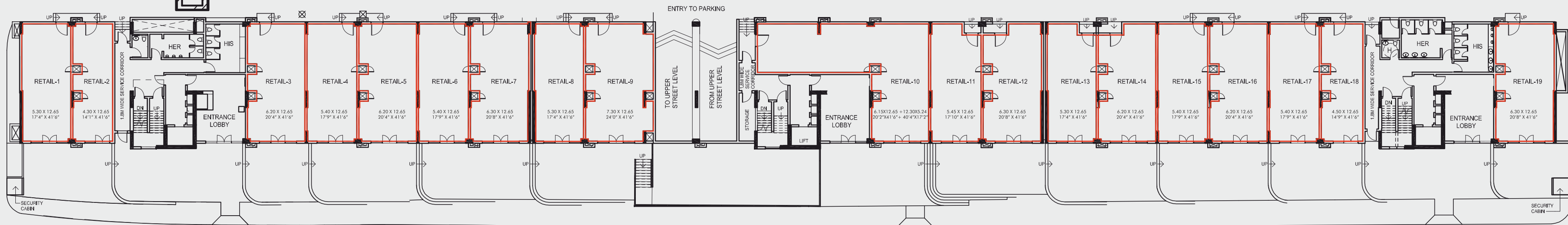
SOHO STREET - UPPER FLOOR PLAN



AREA SCHEDULE

UNIT NO.	R-1	R-2	R-3, R-5, R-16	R-4, R-6, R-15, R-17	R-7	R-8	R-9	R-10	R-11	R-12	R-13	R-14	R-18	R-19
RERA CARPET AREA SQ. M.	66.24	51.98	76.01	67.76	77.01	66.02	86.05	139.13	65.81	73.40	63.86	72.79	54.51	76.62
RERA CARPET AREA SQ. FT.	713.01	559.51	818.17	729.37	828.94	710.64	926.24	1497.60	708.38	790.08	687.39	783.51	586.75	824.74

SOHO STREET - CALLOUT



RERA Regn. No. P52100017890 RERA Carpet Area █

DISCLAIMER

1. The carpet area of the unit mentioned is the usable area, after excluding external walls, but including the area under internal partition wall, as defined in the Real Estate (Regulation and Development) Act ("RERA") and as illustrated in circular no 4/2017 (MahaRera/Secy/File No. 27/84/2017) of MahaRERA.
2. Internal room dimensions are from un-finished wall to wall, in line with sanction plans.
3. The areas, prices, elevation and specifications in the sale agreement signed between you and the company shall be final and binding.
4. The designs, dimensions, cost, facilities, plans, specification, furniture and images are only indicative in nature and are only for the purpose of illustration, including a possible layout. They do not form part of the standard specification and all images shown are artist's impression and stock image proposed. Copyright © 2019 Panchshil Infrastructure Holdings Pvt. Ltd.

LOCATION MAP - SOHO



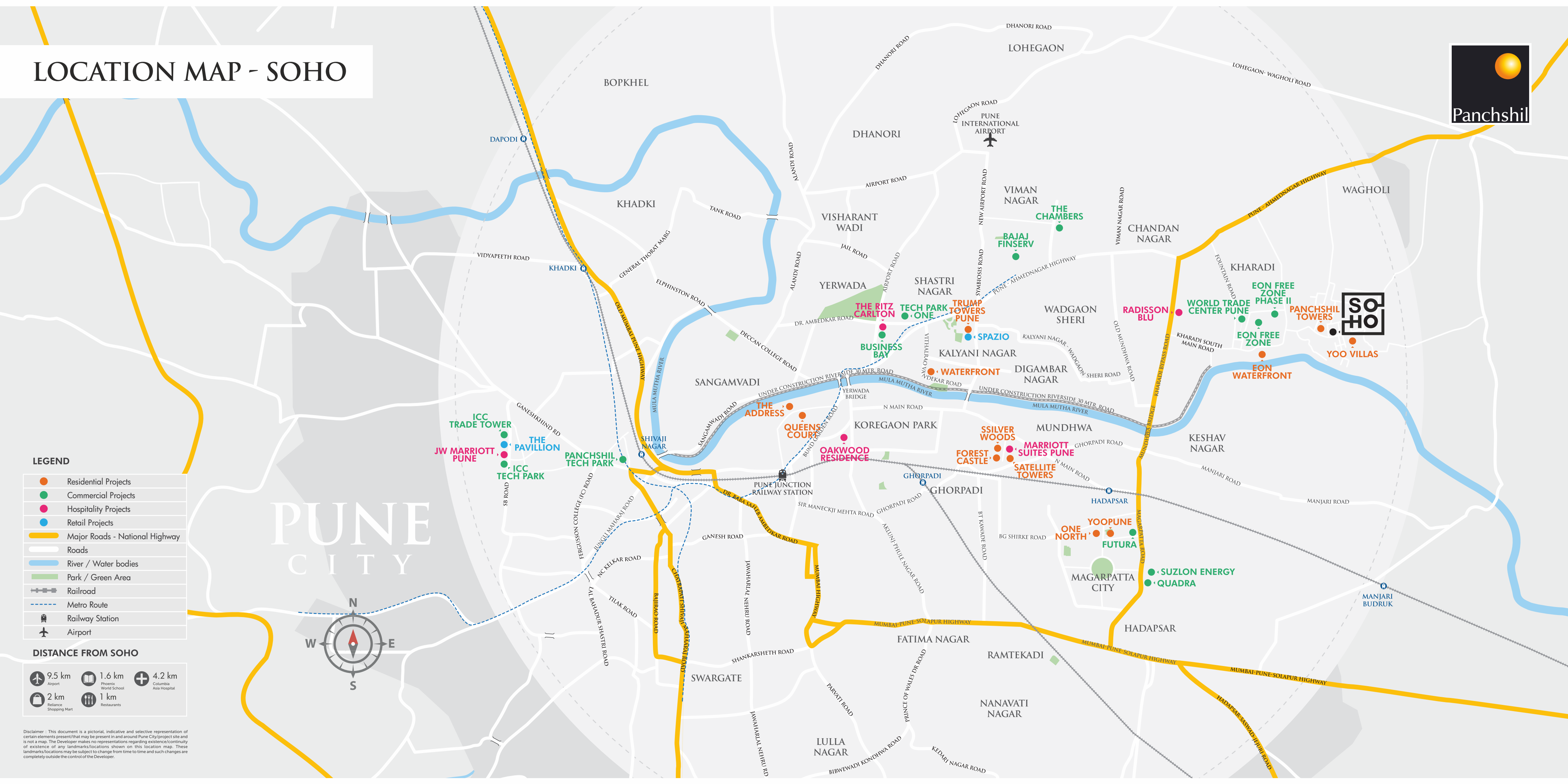
LEGEND

- Residential Projects
- Commercial Projects
- Hospitality Projects
- Retail Projects
- Major Roads - National Highway
- Roads
- River / Water bodies
- Park / Green Area
- Railroad
- Metro Route
- Railway Station
- Airport

DISTANCE FROM SOHO

- 9.5 km
Airport
- 1.6 km
Private World School
- 4.2 km
Columbia Asia Hospital
- 2 km
Reliance Shopping Mart
- 1 km
Restaurants

Disclaimer : This document is a pictorial, indicative and selective representation of certain elements present/that may be present in and around Pune City/project site and is not a map. The Developer makes no representations regarding existence/continuity of existence of any landmarks/locations shown on this location map. These landmarks/locations may be subject to change from time to time and such changes are completely outside the control of the Developer.



India's Iconic Luxury Real Estate Developer



We are renowned for our leadership and excellence in real-estate development with 23 million sq. ft. of prime real-estate successfully delivered and another 20 million sq. ft. under development across multiple asset classes.

As a real-estate developer, we play a significant role in the transformation of Pune city's cosmopolitan skyline along with global partners like YOO, The Trump Organization, JW Marriott, The Ritz-Carlton, Hilton, Oakwood and World Trade Center Association amongst others. Our portfolio spans across high-end residential developments, IT parks, built-to-suit office spaces, special economic zones (SEZ), hotels, convention centres and luxury retail malls.

A recipient of multiple awards for our luxury homes and commercial spaces, Panchshil is synonymous with premium finish, intelligent floor layouts, innovative solutions, high-quality execution, and the best after-sales maintenance.



Trump Towers Pune



YOO Villas - Villa 2 Rear View



yoopune by Philippe Starck - Master Bedroom

All images shot on location.



YOO Villas - Villa 3 Living Room in Sea Breeze Style