



BRAMHACORP
BUSINESS PARK
NEW KALYANI NAGAR



SET A PERFECT BASE FOR SUCCESS

Grit is perseverance. Grit is the go-get-'em attitude that we expect from business runners. Grit is the ability to keep working when everyone tells you that you should give up. So, get gritty and take your dream to the next level.

Launch your business in India's 2nd biggest software hub. Pune comprises of blue chip giants which makes it an ideal destination for the ambitious lot who dream of scaling their business.

If your aim is to invest in assets and nullify the liabilities, you are in the right place to shoot the stars - a space that's made for your dreams, perfect for your ambitions and accommodates your ever-growing passion.

“

*All our dreams can come true,
if we have the
courage to pursue them.*

- Walt Disney

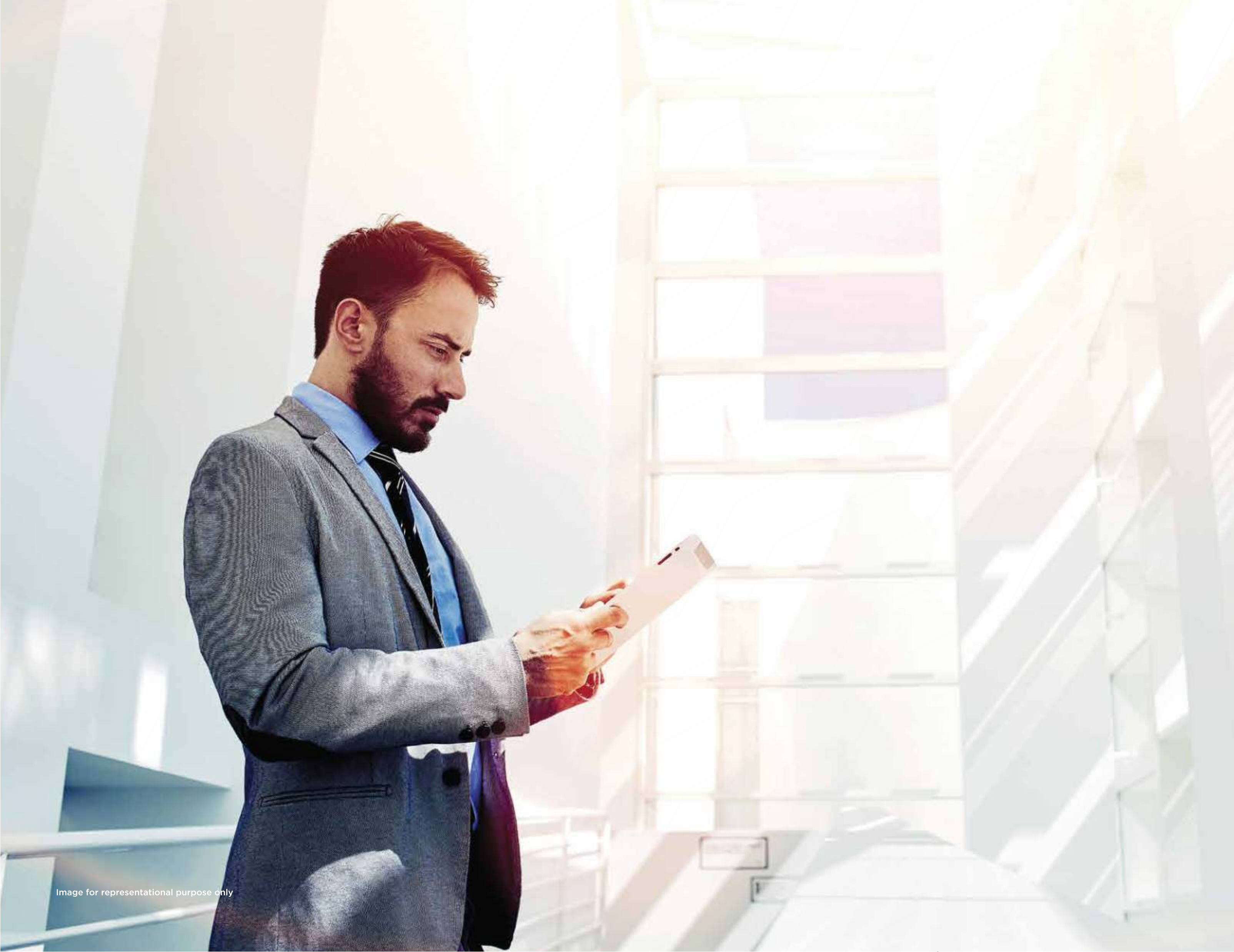


Image for representational purpose only

PLAN YOUR WINNING STRATEGY AT BRAMHACORP BUSINESS PARK

BramhaCorp Business Park presents perfect boutique office spaces for all aspiring business tycoons. Our space is designed to kick-start your million dollar ideas that will change the world forever.

Our commercial space is built for entrepreneurs and professionals and is more importantly, profitable.



Artist's Impression

Subject to 'Important Note' mentioned on the last page

PULL A MASTER STROKE

A prosperous future demands an astute beginning.

Step-up your game.

Inspire yourself.

Peak into your splendid future.

Immerse your enterprise in highly functional design,
contemporary architecture, and a business center,
perfected for a booming success.

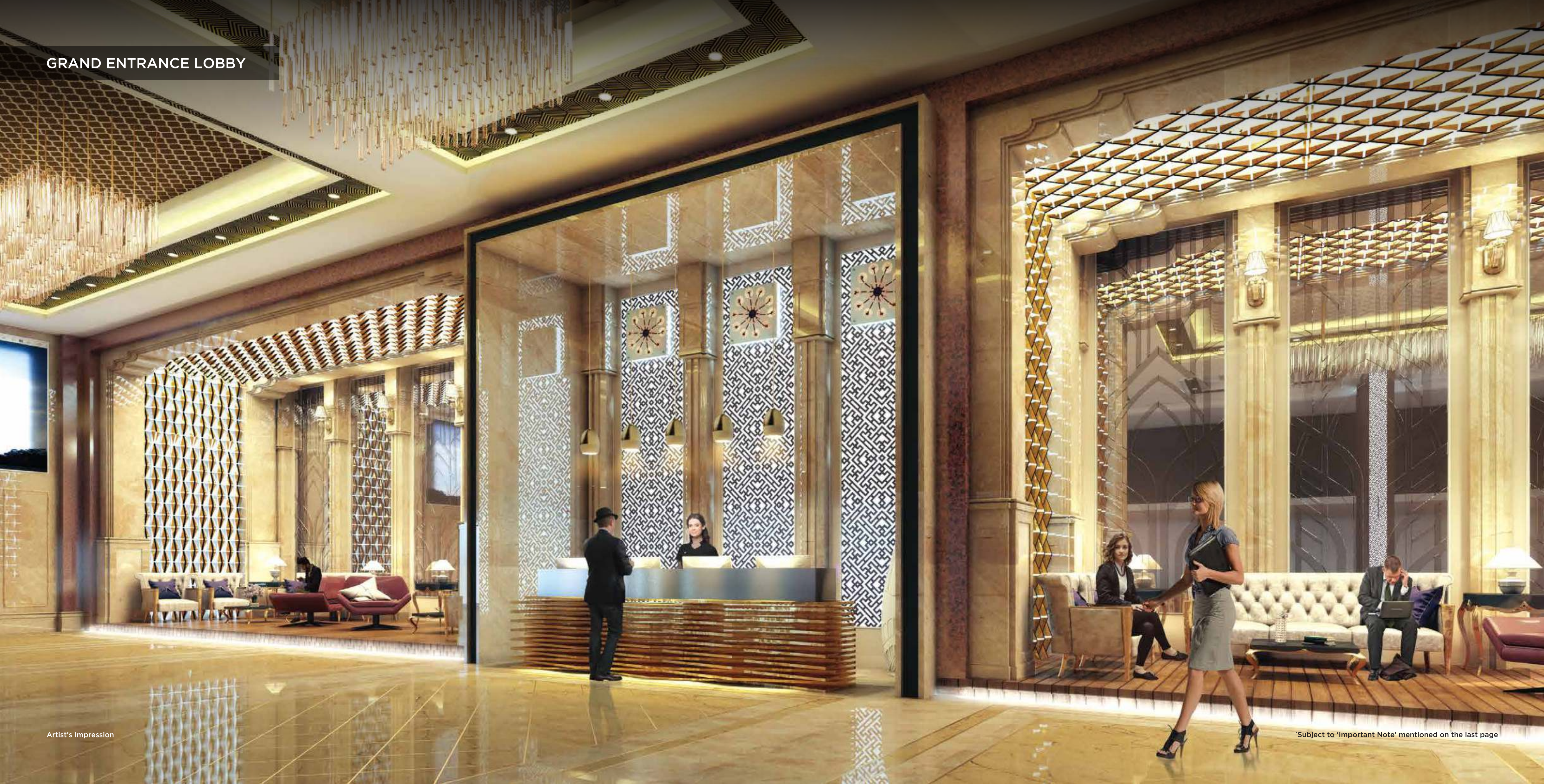
DRIVEWAY



TRAITS SO GOOD, IT'S A WALK IN THE PARK

Your future waits. Enter the facility the classy way. A great driveway defines a business park and makes a positive impression amongst the contacts and at BramhaCorp Business Park, we made sure it's abundantly wide, so you and your associates roll along, together.

GRAND ENTRANCE LOBBY





FOOD COURT



Artist's Impression

Subject to 'Important Note' mentioned on the last page

LEISURE ABOVE ALL

Don't let stress get the best of you.

Relish the moments of peace and ease your mind from tensions. How about breathing in some fresh air on your private balcony? Or grab yourself a plate of food for thought at our food court. Enjoy the serene atmosphere with your colleagues with a cup of coffee. Soak it all in and recharge your batteries.



PLAN YOUR SUCCESS COMFORTABLY

BUSINESS CENTRE SERVICES#

- Concierge Desk
- Conference Room
- Meeting Room
- Seminar Room
- Travel Desk

INTERIORS

- Grand double height entrance lobby at ground level
- Elegantly-designed exclusive common areas
- Elegantly designed lobbies, lounge, meeting room and boardroom

RETAIL

- Large storefront and great visibility
- Independent retail spaces
- Strategic drop-off zones

BACK-UP

- Load Management Generators
- Generator backup for common area
- Wi-Fi connectivity in Lounge Area

SECURITY

- Manned security and RFID enabled boom barriers at traffic entry and exits
- CCTV surveillance for all common areas

ELECTRICAL

- LED lights in all common areas
- Fire-resist and concealed electrical wiring
- Motion sensor based lighting systems in common areas

UTILITY

- High-speed elevators with intelligent controls and Automatic Rescue Doors (ARD)
- Lift Lobby on each floor

PARKING

- Sufficient parking space including mechanical parking system
- Traffic management systems across the campus

RESALE & RENTAL SERVICES

- Resale & Rental services provided exclusively for BramhaCorp Ltd. customers

LOCATION MAP



This is an indicative Map and not to scale. Approximate Distances

ALWAYS STAY ONE STEP AHEAD

Encompassed by so many benefits, comforts are always in vicinity. BramhaCorp Business Park stands amidst all the conveniences any entrepreneur desires for a hassle-free professional life so they can focus on their sole objective - to reach the epitome of their trade.

New Kalyani Nagar's strategic location is one of the emerging real estate destination situated on the Eastern Corridor of Pune, and between Koregaon Park and Viman Nagar, which is in proximity to Kharadi and Hadapsar that makes it a perfect destination for commercial business. Easy access to Pune International Airport, Phoenix Market City Mall and key locations makes it a profitable investment and an advantageous address.

KEY DISTANCES



Pune International Airport
~4.6 KM



Pune Railway Station
~7.5 KM



Magarpatta IT City
~6.5 KM

CREATING BENCHMARKS



RANKED
AMONGST THE
TOP 15 REAL ESTATE
DEVELOPERS - CRISIL,
STANDARD AND
POOR'S RATING

BRAMHACORP LTD
BY CRISIL



BEST
LEARNING &
DEVELOPMENT
CENTRE AWARD
2012-13

BRAMHACORP LTD
BY ESTATE WORLD



BEST
INNOVATIVE &
MARQUE
DEVELOPER
OF THE YEAR 2013

BRAMHACORP LTD
BY ESTATE WORLD



INDIA'S
TOP 50 REAL
ESTATE BRANDS OF
2018

BRAMHACORP LTD
BY IBE



BEST
HOSPITALITY
PROJECT AWARD
YEAR 2015

LE MERIDIEN
(MAHABLESHWAR)



BEST
RESIDENTIAL
PROPERTY AWARD
YEAR 2016

SUNCITY PLATINUM
BY REALTY PLUS



BEST
THEMED
PROPERTY AWARD
YEAR 2017

F- RESIDENCES
BY REALTY PLUS



BEST
DESIGNED
PROJECT OF THE
YEAR 2014

F- RESIDENCES
BY SILICON INDIA



BEST
PROJECT OF THE
YEAR 2013
WEST

F- RESIDENCES
BY ESTATE WORLD

35
YEARS
OF RICH LEGACY

PIONEERING THE
PUNE REAL ESTATE MARKET
SINCE 1982



**Sheraton
Grand**
PUNE BUND GARDEN HOTEL

Le **MERIDIEN**
MAHABALESHWAR
RESORT & SPA


**RESIDENCY
LAKE RESORT & SPA**
MULSHI
DIST. PUNE


**RESIDENCY
CLUB**
PUNE


RESIDENCES
new kalyani nagar



BOULEVARD TOWERS

PRIME SHOWROOM & OFFICE SPACES
SADHU VASWANI CHOWK, CAMP

SURROUNDING NEIGHBORHOODS ARE NOT AS ACTUAL



Architectural Representation

Extravagance and Luxury

Style and sophistication is not a trend, it's a habit nurtured here at every corner of Boulevard. The most preferred commercial address of Pune City, henceforth would be resembled with the name - BOULEVARD ! A vision to bring exclusivity and luxury makes a mark forever and it will be a milestone as you have dreamed really BIG for your business indeed!

MahaRERA Registration No.: P52100004150
<http://maharera.mahaonline.gov.in>

IMPORTANT NOTE - The subject project identified as 'BOULEVARD' part of Towers Phase I has been registered via MahaRERA Registration No. P52100004150. The subject project is registered for identified and defined part portion of larger project having multiple buildings as shown in the entire display of larger project. The entire larger multiple buildings shown are not part of the subject registered project. The subject project under this correspondence includes 'Wing A of Phase 1, having 23 Shops on Upper ground floor / Ground Floor, 14 shops on 01st Floor, 14 Offices on 02nd Floor, 44 Offices on 03rd Floor, 44 Offices on 04th Floor and 43 offices on 05th Floor'. These units from sanctioned projects are only offered for advertisement and sale under this correspondence and no other parts from larger project buildings are offered for advertisement and sale. The other attached and continuous part of larger project building will be registered as separate projects and those vertical and horizontal sections of building are not part and parcel of subject project for which this advertisement and correspondence is issued. This clarification is issued as per provisions mentioned in Real Estate (Regulation and Development) Act, 2016, to avoid any kind of loss or damage to any persons and to disclose true and correct information about registered project. The registered project shall be developed and completed in accordance with the sanctioned plans, layout plan and specifications approved by the Competent Authorities. For any queries or difficulties or for better understanding you are requested to contact the Promoter's address with prior appointment and intimation. Terms & Conditions Apply

RESIDENCES
new kalyani nagar
411014

2, 3, 3.5 BHK
FASHION CONDOS

Amenities with a perfect combination
of comfort & ease.
Designed with an eye for details
of fashion & style statement.

PHASE-II NEARING
POSSESSION

PHASE II: Maha RERA No.: P52100001526 (for Tower 5, 6 & Tower 7) | PHASE II: Maha RERA No.: P52100002099 (for Tower 8)



VANTAGE TOWER

SMART OFFICE SPACES
BAVDHAN - PASHAN ROAD, PUNE

MahaRERA Registration No.: P52100002254
<http://maharera.mahaonline.gov.in>



BRAMHACORP

Realty • Hospitality • Leisure



Maha RERA Registration No.: P52100017050
<https://maharera.mahaonline.gov.in/>

Site Address: BramhaCorp Business Park, Next to F-Residences, New Kalyani Nagar, Pune - 411 014
Head Office: Residency Club, 3, Queen's Garden, Camp, Pune - 411 001
Call: +91 76720 00666 | Email: presales@bramhacorp.in | www.bramhacorp.in

IMPORTANT NOTE - The subject project identified as 'BRAMHACORP BUSINESS PARK (T9-A1) - PHASE 1' has been registered via MahaRERA Registration No. P52100017050 and details are available on the website <https://maharera.mahaonline.gov.in> under registered projects. The subject project is registered for identified and defined part portion of proposed larger project Building. The entire larger proposed building is shown in the advertisement is not part of the subject registered project. The subject project under this correspondence includes "Wing A, having 25 Shops on Ground Floor to 2nd Floor and 493 Offices from 3rd Floor till 20th Floor." These total 518 units from the sanctioned project are only offered for advertisement and sale under this correspondence and no other part/s from larger proposed project is/are offered for advertisement and sale. The other upper vertical and horizontal attached and continuous part of larger proposed project building/s will be registered as separate projects and those vertical and horizontal sections of proposed larger building/s are not part and parcel of subject project for which this advertisement and correspondence is issued. This clarification is issued as per provisions mentioned in the Real Estate (Regulation and Development) Act, 2016, to avoid any kind of loss or damage to any person and to disclose true and correct information about registered project. The registered project shall be developed and completed in accordance with the sanctioned plans, layout plan and specifications approved by the Competent Authorities. For any queries of difficulties or for better understanding you are requested to contact the Promoter's address with prior appointment and intimation. Brochure Version: 002/Feb/2020