



# florida riverwalk

WHERE YOUR STORY BEGINS...

---

KESHAV NAGAR, PUNE

**PHASE - I**



# florida riverwalk

WHERE YOUR STORY BEGINS...

---

**RERA No.: Phase - I : P52100015819**

---

# OXFORD GROUP

A Promise!

With a legacy of 30 years, the Oxford Group has delivered over 7 million square feet of Real Estate, in addition to having diversified business interests across the verticals of Hospitality and Leisure.



Oxford 1Earth, a unit of the Oxford Group builds futuristic living concept homes. The cornerstone of our approach to work is the principle of innovativeness. We make future-ready homes; residences that reflect modern lifestyles. We specialise in building quality projects with premium apartments that are contemporary and stylish. Oxford 1Earth believes in the philosophy of optimised use of space, smart design and ensuring customer satisfaction at every stage.





# florida riverwalk

WHERE YOUR STORY BEGINS...



\* This image is for representational purposes only.

A journey of a thousand miles begins with a step. When you move into a home at Riverwalk, you enter a world of natural living, with picturesque landscapes welcoming you from every window. Living here is akin to a pleasurable walk in the countryside. The joy of living near natural elements like fresh air, abundant daylight and serene waterviews will ease away all your stresses.

## WELCOME TO A PLACE WHERE YOUR STORY BEGINS...



\* Actual Sample Flat Image

\* for representational purposes only.





**GREEN  
LIVING**



\* This image is for representational purposes only.

# WELCOME TO RIVERWALK

---

Spread across 4 acres of land (approx), Florida Riverwalk consists of 2 towers featuring 2 and 3 BHK apartments with landscape.

Like every Oxford 1Earth development, the project portrays thoughtful planning, quality finishes and superior construction practices.





**PEACEFUL  
LIVING**



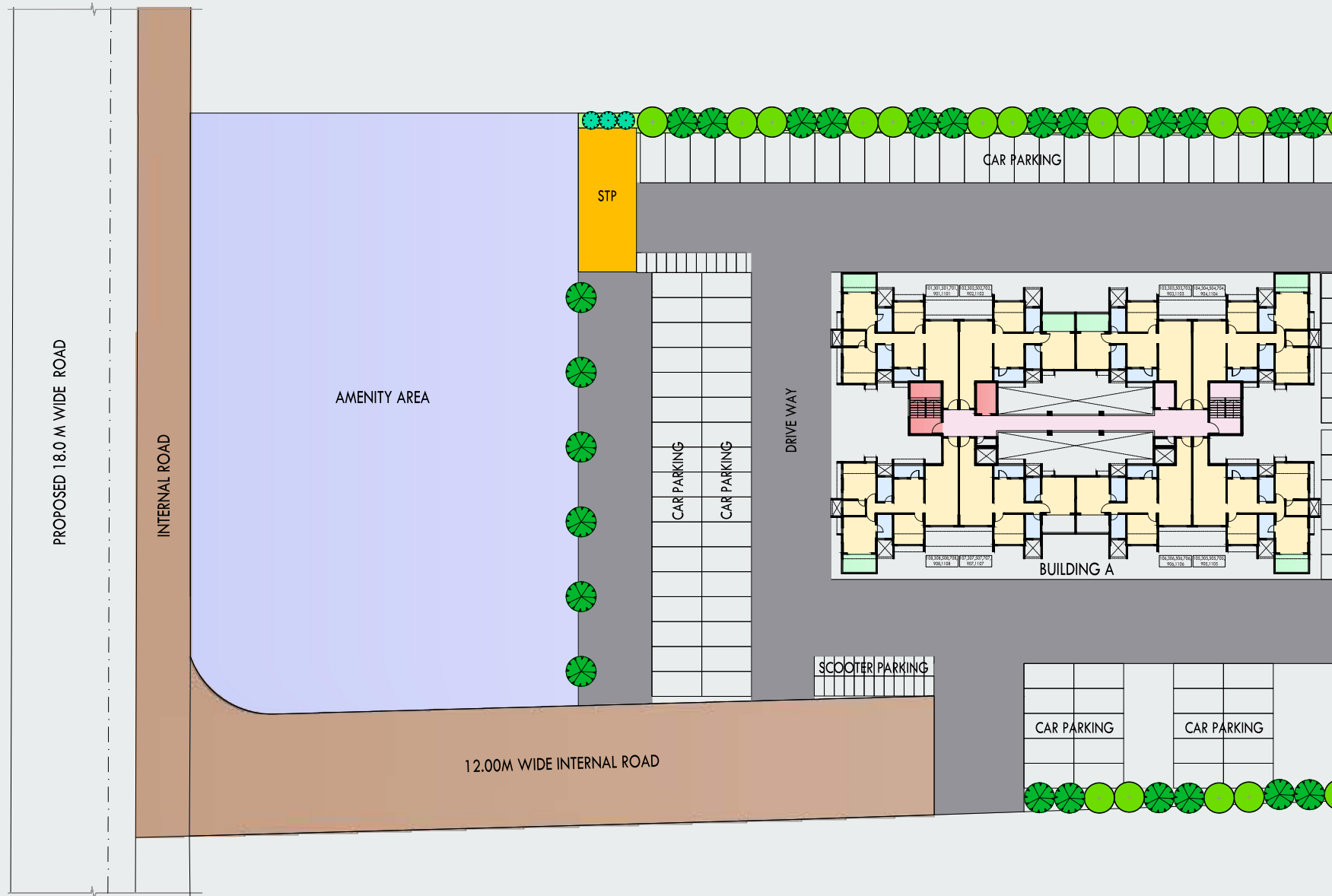


# JOYFUL LIVING



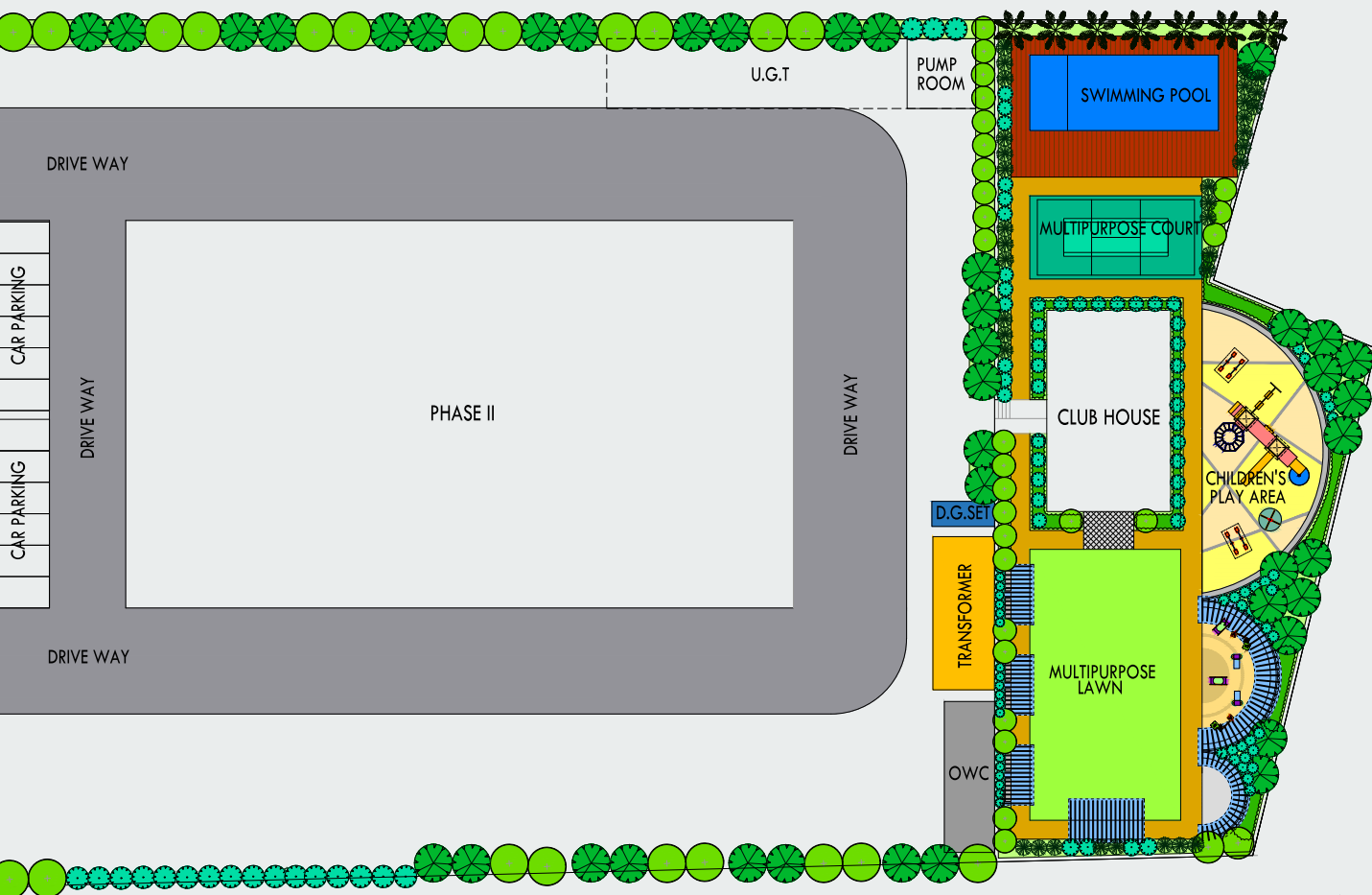
\* These images are for representational purposes only.

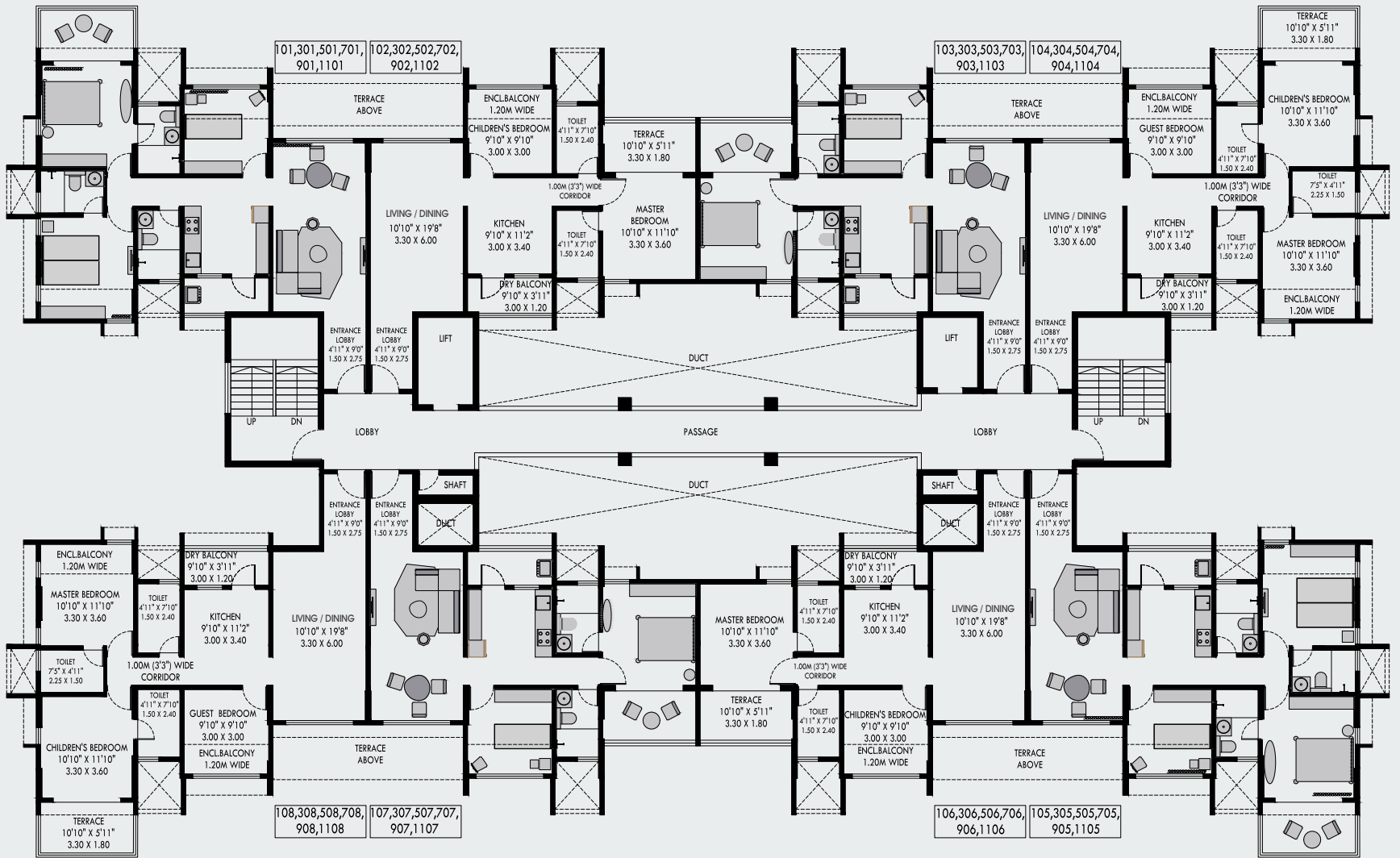
# PROJECT LAYOUT



\*For Representational purpose only.

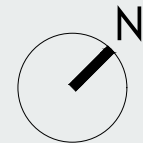




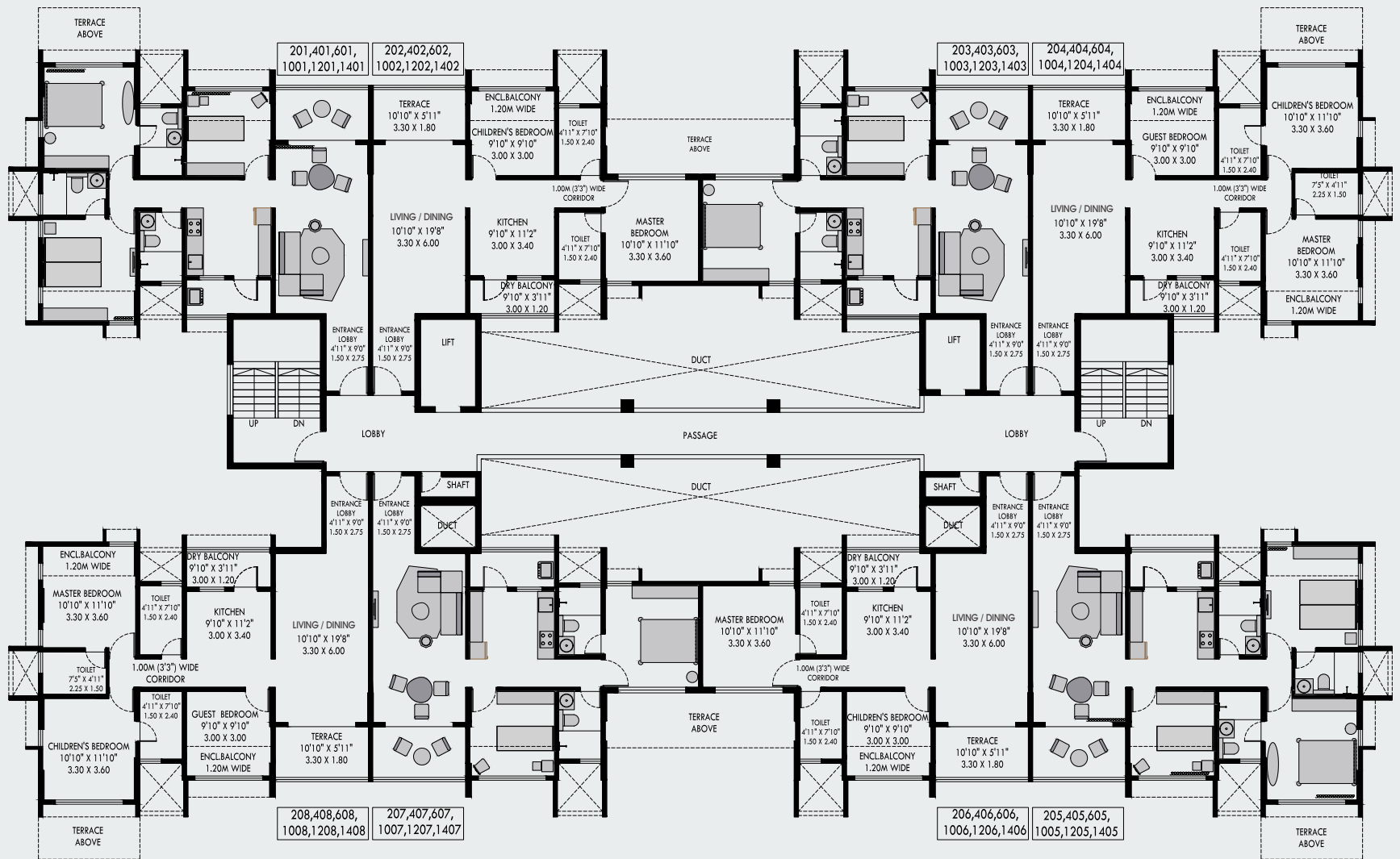


'A' Building  
**TYPICAL ODD FLOOR PLAN**

2 & 3 BHK Apartments

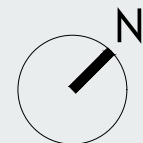






'A' Building  
**TYPICAL EVEN FLOOR PLAN**

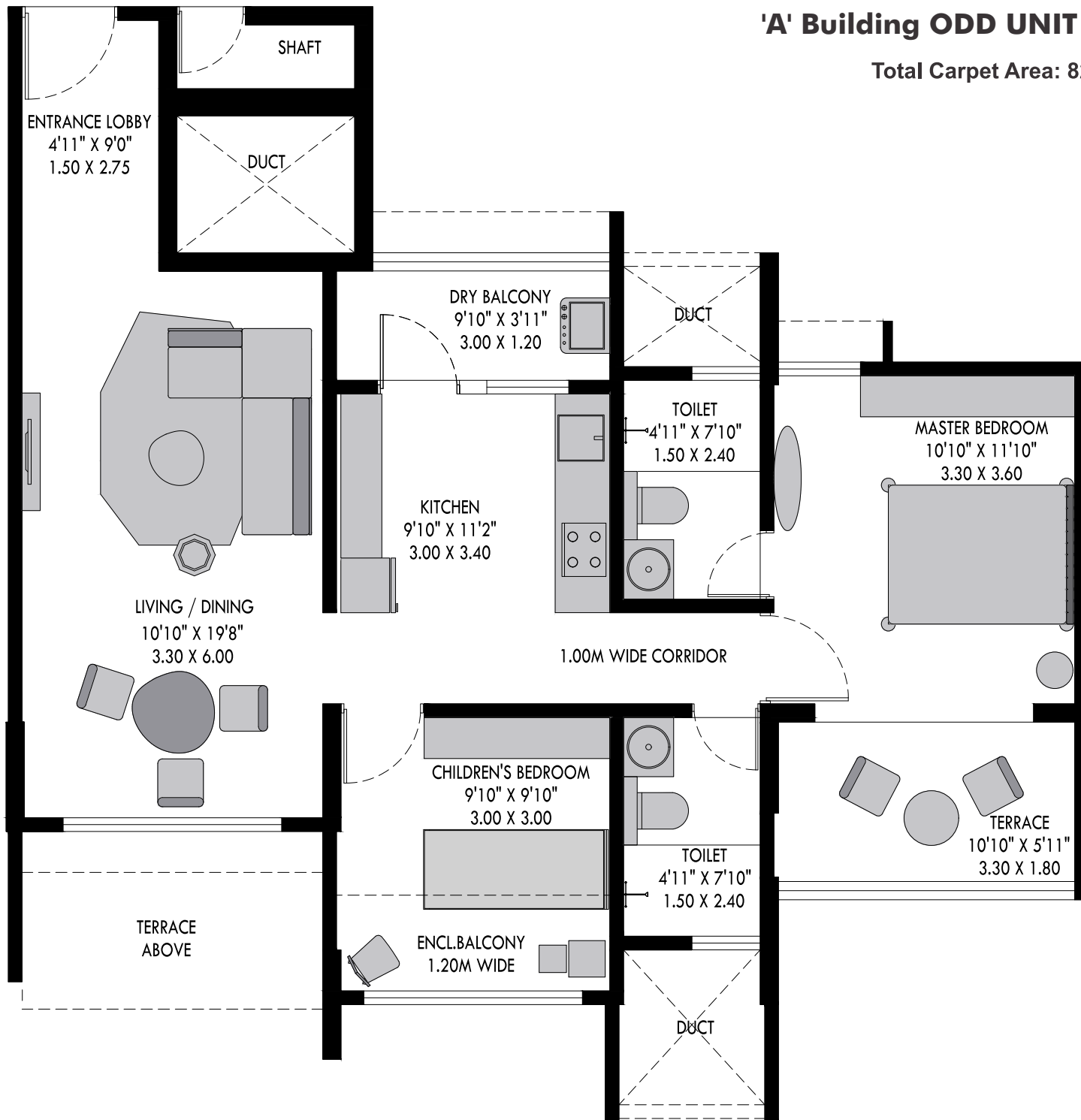
2 & 3 BHK Apartments



# 2BHK APARTMENT

'A' Building ODD UNIT PLAN

Total Carpet Area: 820 sq.ft.

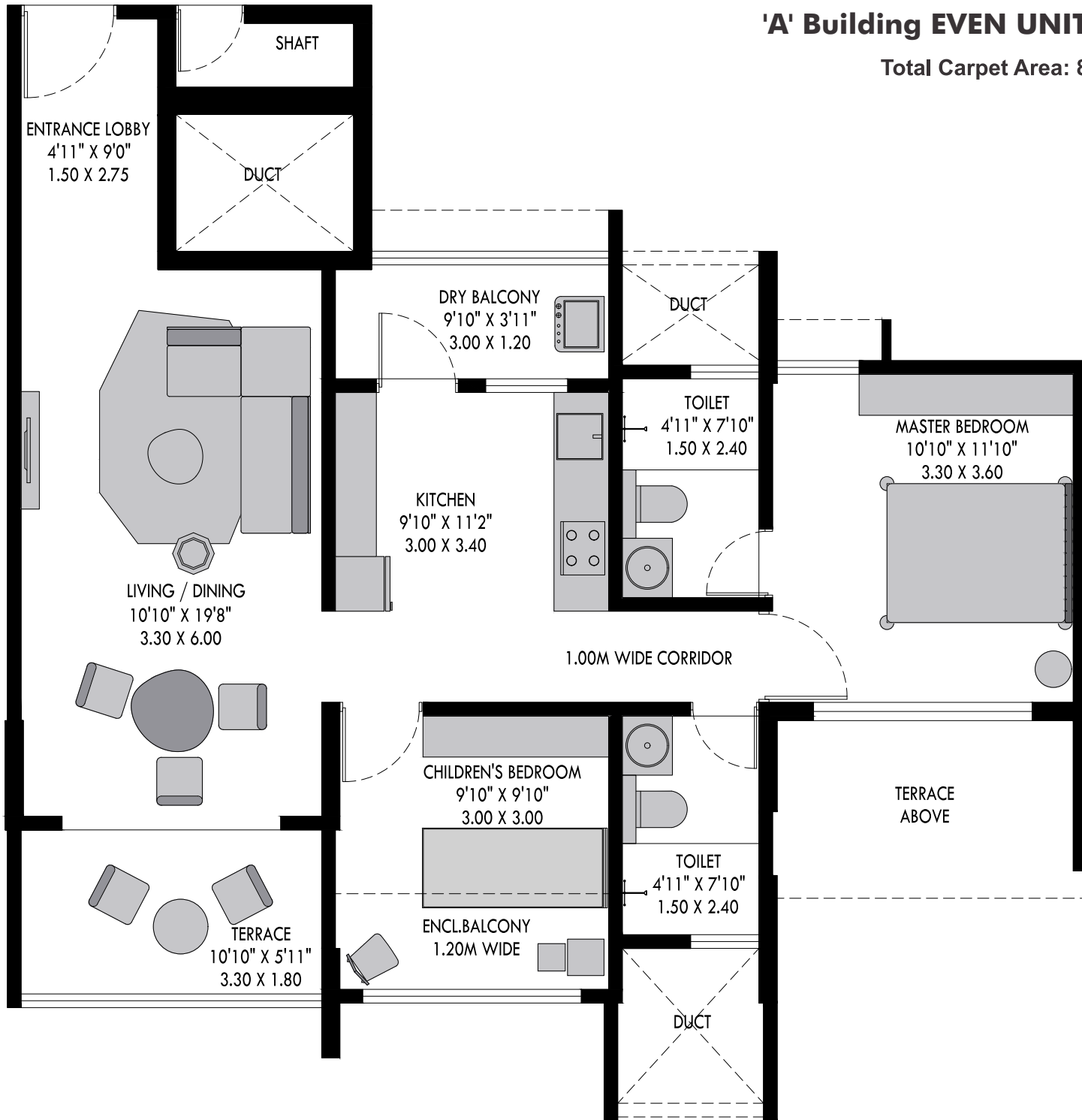




# 2BHK APARTMENT

'A' Building EVEN UNIT PLAN

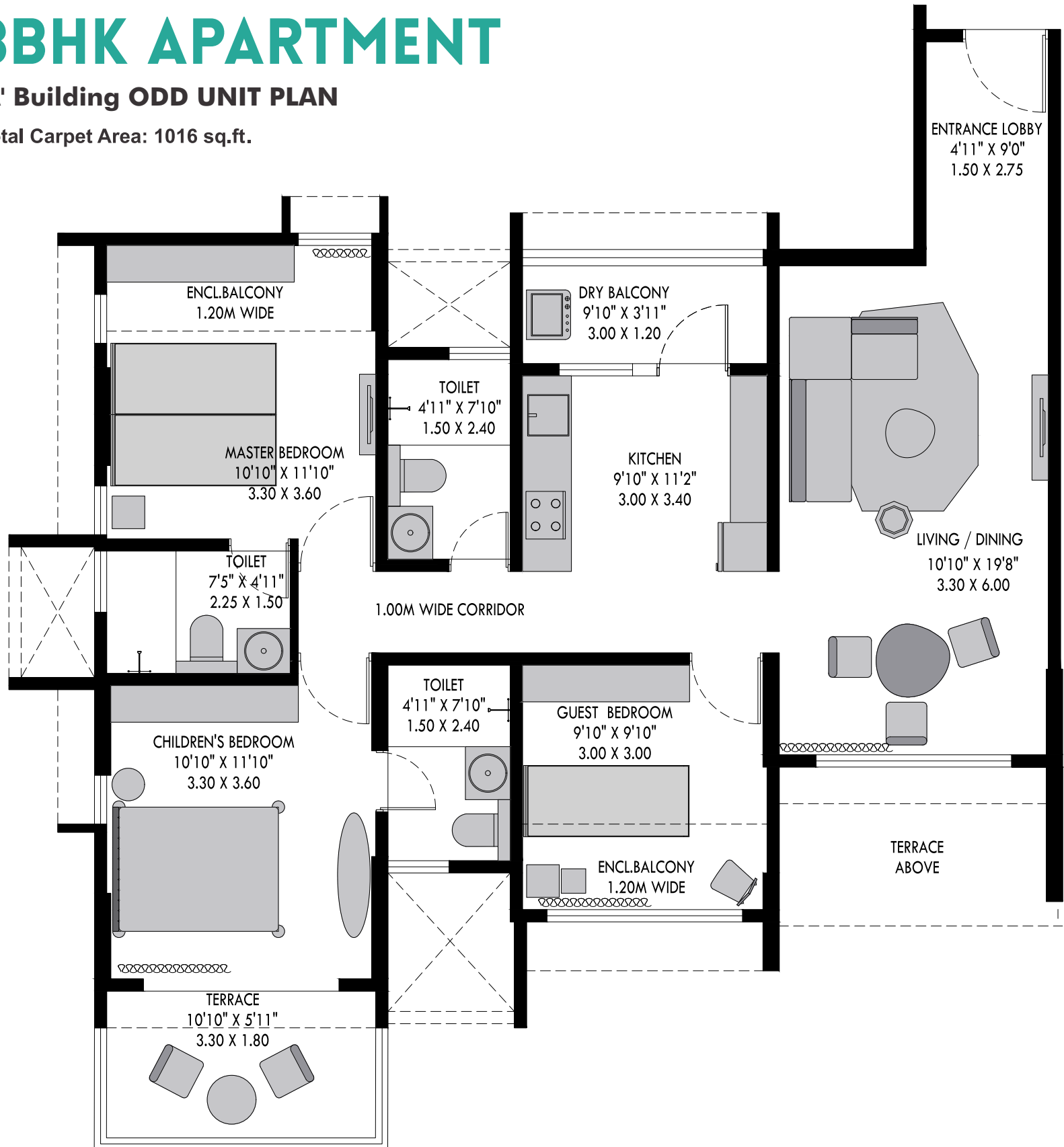
Total Carpet Area: 820 sq.ft.



# 3BHK APARTMENT

## 'A' Building ODD UNIT PLAN

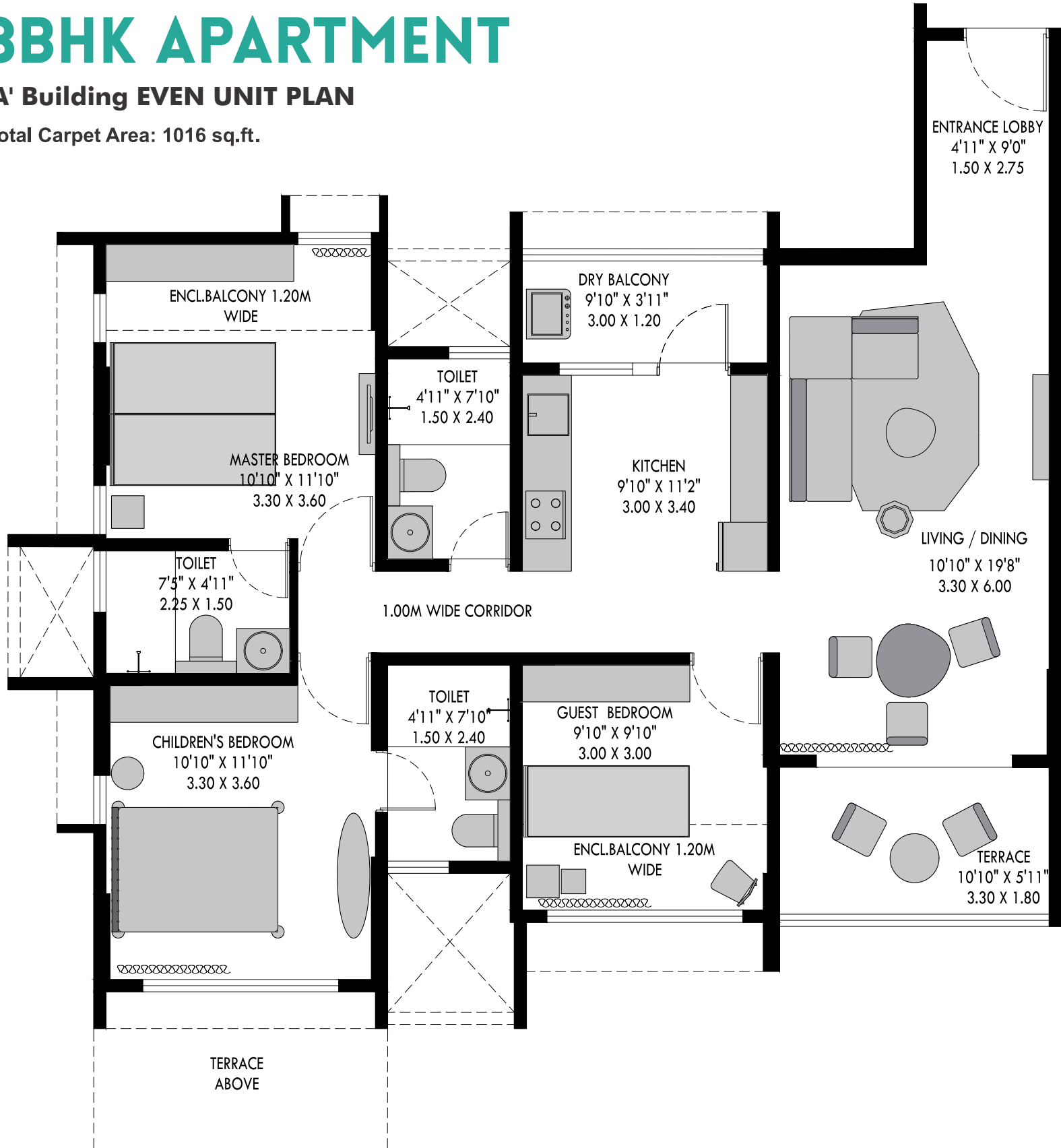
Total Carpet Area: 1016 sq.ft.



# 3BHK APARTMENT

## 'A' Building EVEN UNIT PLAN

Total Carpet Area: 1016 sq.ft.





# QUALITY IN EVERY DETAIL

---

## APARTMENT FEATURES :

- ⊗ Vitrified Tiles
- ⊗ Kitchen with Top Counter
- ⊗ Provision for Washing Machine and Dish Washer in Utility Area
- ⊗ Video Door Camera
- ⊗ UPVC Sliding Windows
- ⊗ Wooden Doors
- ⊗ Plastic Paint Finish in the Apartment

## CLUB HOUSE AMENITIES (PHASE II) :

- ⊗ Swimming Pool including Kids Pool
- ⊗ Health Club
- ⊗ Multi-Facility Room
- ⊗ Table Tennis
- ⊗ Board Game Room
- ⊗ Multi-Purpose Open Court
- ⊗ Kids Play Area
- ⊗ Party Lawn

## BUILDING FEATURES :

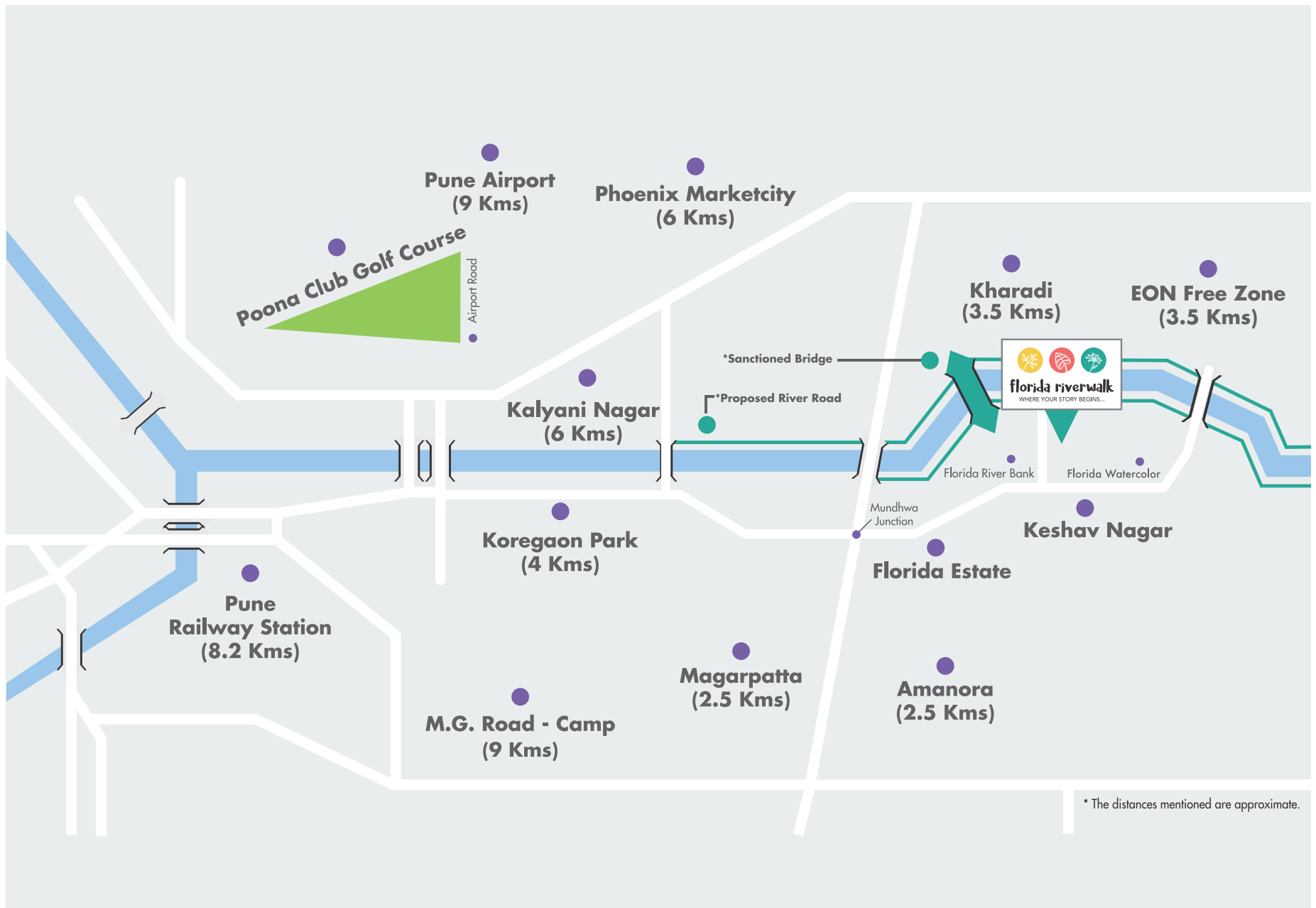
- ⊗ 2 Towers Spread across (approx) 4 Acres
- ⊗ Entrance Lobby
- ⊗ Beautiful Landscape Garden
- ⊗ 2 Elevators in Each Tower
- ⊗ Well Paved Internal Roads
- ⊗ Building Designed to Resist Seismic Forces

## SECURITY :

- ⊗ Intercom System
- ⊗ Video Door Phone
- ⊗ CCTV

## GENERAL FEATURES :

- ⊗ Modernly Designed Elevation
- ⊗ Power Back Up in Common Area
- ⊗ Piped Gas Services
- ⊗ Sewage Treatment Plant
- ⊗ Hot Water Provision in Master Bedroom
- ⊗ Underground Water Storage
- ⊗ Water Treatment Softening Plant



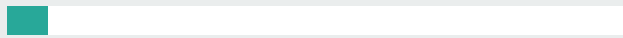
# A WELL-CONNECTED OASIS

Florida Riverwalk is located in the young and upcoming location of Keshav Nagar, Mundhwa. The location of the property is only 4 kms from the city centre and 2 kms from the IT and corporate hubs. It is also in the vicinity of major shopping malls like Phoenix Market City, Nitesh Hub, Amanora, and Seasons Mall. There are many reputed schools, hospitals, and hotels that are in close proximity to the project. At Florida Riverwalk, you enjoy the ease and convenience of urban life while nestled in the sweet luxury of nature.

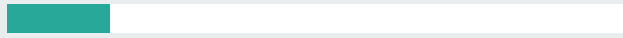
# CONNECTIVITY

---

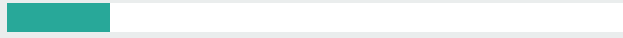
Bus Stand 1 Km



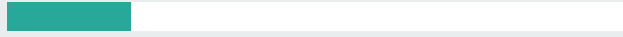
International School 2.5 Km



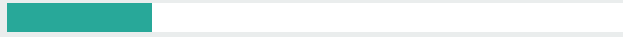
Magarpatta 2.5 Km



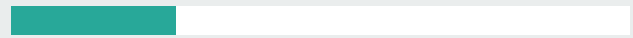
Hospital 3 Km



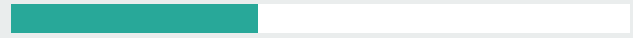
Kharadi Eon IT 3.5 Km



Koregaon Park 4 Km



Kalyani Nagar 6 Km



Pune Airport 7 Km



Railway Station 8.2 Km



National Highway 12 Km





## **OUR AWARD WINNING BRANDS**

O HOTEL | OXFORD GOLF RESORT

## **COMPLETED PROJECTS**

FLORIDA ESTATE | FLORIDA RIVERBANK | FLORIDA MINI  
OXFORD AVENUE | OXFORD VILLAGE | OXFORD HALLMARK  
6 PRABHAT | KENSINGTON COURT | WINDSOR AVENUE

## **ONGOING PROJECTS**

FLORIDA WATERCOLOR | FLORIDA RIVERWALK | FLORIDA HILLS AT EKTA CALIFORNIA  
OXFORD PARADISE 'D' | THE RESIDENCES



**florida riverwalk**

WHERE YOUR STORY BEGINS...

## CREDITS

ARCHITECT

**ASSOCIATED SPACE DESIGNERS**

LIAISON

**ASSOCIATED SPACE DESIGNERS**

DEVELOPER

**OXFORD 1EARTH**

LANDSCAPE

**STUDIO HAUS**

INTERIOR DESIGNER

**STUDIO HAUS**

RCC STRUCTURE

**THE AXIS STRUCTURAL CONSULTANTS**



# florida riverwalk

WHERE YOUR STORY BEGINS...



**RERA No.: Phase - I : P52100015819**

---

Disclaimer: The Information provided in this brochure is neither an offer nor a binding contract and the content mentioned herein is presented to best of our knowledge. Some of the pictures and specifications have been used for representational purpose and represent an Architect's impression of the development. The Developer has the right to make additions, alterations or amendments to the layout, locations, plans, elevations, specifications, floors, facilities, amenities, material, fittings, features, without any notice and makes no warranty, representation or undertaking whether expressed or implied, nor assumes any legal liability, whether direct or indirect, or responsibility for the accuracy, completeness, or usefulness of any information in this brochure/promotional document.



**OXFORD1EARTH**  
Create. Build. Sustain.

**501, Kensington Court,  
Off North Main Road, Lane 5,  
Koregaon Park, Pune - 411001 (INDIA)  
Phone : +912026158000 / 7507377777**

**[www.oxford1earth.com](http://www.oxford1earth.com)**